

Product datasheet for **TA319955**

ATAD3A Rabbit Polyclonal Antibody

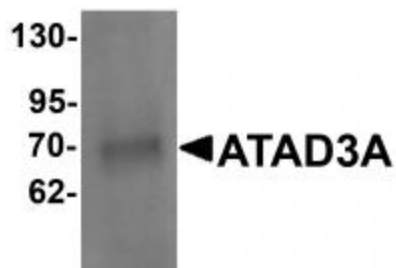
Product data:

Product Type:	Primary Antibodies
Applications:	IF, WB
Recommended Dilution:	WB: 1 ug/mL, ICC: 20 ug/mL, IF: 20 ug/mL
Reactivity:	Human, Mouse, Rat
Host:	Rabbit
Isotype:	IgG
Clonality:	Polyclonal
Immunogen:	ATAD3A antibody was raised against a 19 amino acid synthetic peptide near the amino terminus of human ATAD3A.
Formulation:	ATAD3A Antibody is supplied in PBS containing 0.02% sodium azide.
Concentration:	1ug/ul
Purification:	ATAD3A Antibody is affinity chromatography purified via peptide column.
Conjugation:	Unconjugated
Storage:	Store at -20°C as received.
Stability:	Stable for 12 months from date of receipt.
Gene Name:	ATPase family, AAA domain containing 3A
Database Link:	NP_060658 Entrez Gene 108888 Mouse Entrez Gene 298682 Rat Entrez Gene 55210 Human Q9NVI7
Background:	ATAD3A Antibody: ATAD3A is a member of the AAA ATPase family, a family of proteins that catalyze ATP into ADP and are involved in several cellular functions such as cell-cycle regulation, protein proteolysis and transport. The AAA ATPase family is characterized by a highly conserved AAA motif containing Walker homology sequences and imparting ATPase activity. Mitochondrial membrane proteins ATAD3A/B contribute to the stabilization of nucleoids and may participate in the transformation pathway and the chemosensitivity of oligodendrogliomas. The gene encoding ATAD3A/B/C maps to human chromosome 1 and has been suggested to be an anti-apoptotic marker.
Synonyms:	FLJ10709; FLJ35514

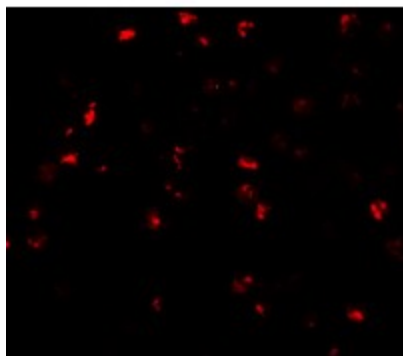


[View online »](#)

Product images:



Western blot analysis of ATAD3A in Daudi cell lysate with ATAD3A antibody at 1 ug/mL.



Immunofluorescence of ATAD3A in Daudi cells with ATAD3A antibody at 20 ug/mL.



Immunocytochemistry of ATAD3A in Daudi cells with ATAD3A antibody at 20 ug/mL.