

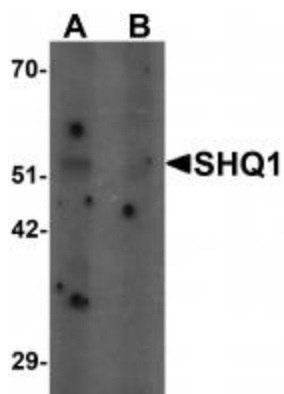
Product datasheet for **TA319954**

SHQ1 Rabbit Polyclonal Antibody

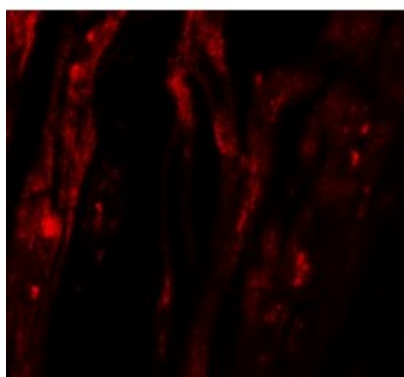
Product data:

Product Type:	Primary Antibodies
Applications:	IF, WB
Recommended Dilution:	WB: 1 ug/mL, IF: 20 ug/mL
Reactivity:	Human
Host:	Rabbit
Isotype:	IgG
Clonality:	Polyclonal
Immunogen:	SHQ1 antibody was raised against a 17 amino acid synthetic peptide near the amino terminus of human SHQ1.
Formulation:	SHQ1 Antibody is supplied in PBS containing 0.02% sodium azide.
Concentration:	1ug/ul
Purification:	SHQ1 Antibody is affinity chromatography purified via peptide column.
Conjugation:	Unconjugated
Storage:	Store at -20°C as received.
Stability:	Stable for 12 months from date of receipt.
Predicted Protein Size:	63 kDa
Gene Name:	SHQ1, H/ACA ribonucleoprotein assembly factor
Database Link:	NP_060600 Entrez Gene 55164 Human Q6PI26
Background:	SHQ1 Antibody: SHQ1 is the human homolog of yeast Shq1p, a protein that acts as an accessory factor in the assembly of H/ACA ribonucleoproteins. SHQ1 has been shown to bind the major H/ACA core protein and the pseudouridine synthase NAP57, but precedes the assembly role of NAF1 and of the other H/ACA core proteins. SHQ1 assists in the assembly of H/ACA-box ribonucleoproteins that function in the processing of ribosomal RNAs, modification of spliceosomal small nuclear RNAs, and stabilization of telomerase.
Synonyms:	GRIM-1; Shq1p

[View online »](#)

Product images:


Western blot analysis of SHQ1 in human heart tissue lysate with SHQ1 antibody at 1 ug/mL in (A) the absence and (B) the presence of blocking peptide.



Immunofluorescence of SHQ1 in human heart tissue with SHQ1 antibody at 20 ug/mL.