

Product datasheet for **TA319953**

PIWIL2 Rabbit Polyclonal Antibody

Product data:

Product Type:	Primary Antibodies
Applications:	IHC
Recommended Dilution:	IHC: 5 ug/mL
Reactivity:	Human
Host:	Rabbit
Isotype:	IgG
Clonality:	Polyclonal
Immunogen:	PIWI-L2 antibody was raised against a 14 amino acid synthetic peptide near the center of human PIWI-L2.
Formulation:	PIWI-L2 Antibody is supplied in PBS containing 0.02% sodium azide.
Concentration:	1ug/ul
Purification:	PIWI-L2 Antibody is affinity chromatography purified via peptide column.
Conjugation:	Unconjugated
Storage:	Store at -20°C as received.
Stability:	Stable for 12 months from date of receipt.
Gene Name:	piwi like RNA-mediated gene silencing 2
Database Link:	NP_060538 Entrez Gene 55124 Human Q8TC59
Background:	PIWI-L2 Antibody: PIWI-L2 is a member of the PIWI subfamily of Argonaute proteins, evolutionarily conserved proteins containing both PAZ and Piwi motifs that are crucial for the biogenesis and function of small non-coding RNAs and play important roles in stem cell self-renewal, RNA silencing, and translational regulation in diverse organisms. PIWI-L2 has been implicated in multiple roles including stem cell self-renewal and is highly expressed in many breast cancers. In these tumors, PIWI-L2 silences the expression of STAT3, a regulator of Bcl-XL and cyclin D1, allowing the proliferation and survival of breast cancer stem cells. Recent studies have shown that overexpression of PIWI-like proteins are potential biomarkers for colon and other cancers.

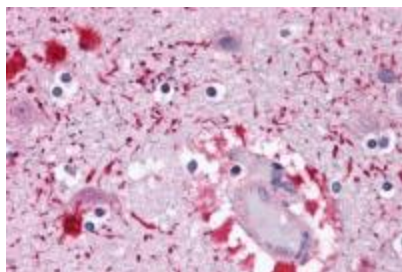


[View online »](#)

Synonyms: CT80; HILI; mili; PIWIL1L

Protein Pathways: Dorso-ventral axis formation

Product images:



Immunohistochemistry of PIWI-L2 in human brain tissue with PIWI-L2 antibody at 5 ug/mL.