

## Product datasheet for **TA319951**

### ATG2B Rabbit Polyclonal Antibody

#### Product data:

Product Type:	Primary Antibodies
Applications:	IF, WB
Recommended Dilution:	WB: 1 - 2 ug/mL, IF: 20 ug/mL
Reactivity:	Human
Host:	Rabbit
Isotype:	IgG
Clonality:	Polyclonal
Immunogen:	ATG2B antibody was raised against a 19 amino acid synthetic peptide near the amino terminus of human ATG2B.
Formulation:	ATG2B Antibody is supplied in PBS containing 0.02% sodium azide.
Concentration:	1ug/ul
Purification:	ATG2B Antibody is affinity chromatography purified via peptide column.
Conjugation:	Unconjugated
Storage:	Store at -20°C as received.
Stability:	Stable for 12 months from date of receipt.
Predicted Protein Size:	229 kDa
Gene Name:	autophagy related 2B
Database Link:	<a href="#">NP_060506</a> <a href="#">Entrez Gene 55102 Human</a> <a href="#">Q96BY7</a>

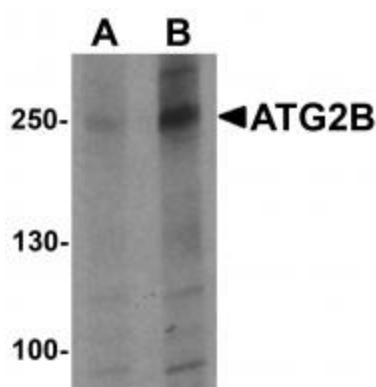
[View online »](#)

**Background:**

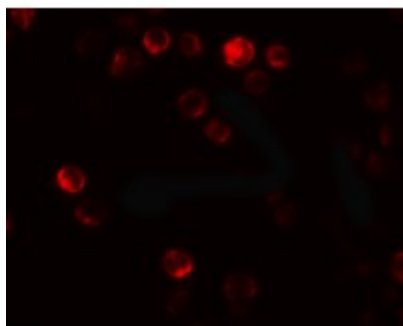
ATG2B Antibody: Autophagy, the process of bulk degradation of cellular proteins through an autophagosomic-lysosomal pathway is important for normal growth control and may be defective in tumor cells. It is involved in the preservation of cellular nutrients under starvation conditions as well as the normal turnover of cytosolic components. This process is negatively regulated by TOR (Target of rapamycin) through phosphorylation of autophagy protein APG1. Another member of the autophagy family of proteins is ATG2B, one of two homologs of ATG2 that is essential for autophagosome formation and important for regulation of size and distribution of lipid droplets. Relatively high rates of ATG2B mutations were observed in gastric and colorectal carcinomas, suggesting that deregulating the autophagy process may contribute to cancer development.

**Synonyms:**

C14orf103

**Product images:**


Western blot analysis of ATG2B in K562 cell lysate with ATG2B antibody at (A) 1 and (B) 2 ug/ml



Immunofluorescence of ATG2B in K562 cells with ATG2B antibody at 20 ug/mL.