

Product datasheet for **TA319950**

WIPI1 Rabbit Polyclonal Antibody

Product data:

Product Type:	Primary Antibodies
Applications:	IF, WB
Recommended Dilution:	WB: 1 - 2 ug/mL, IF: 20 ug/mL
Reactivity:	Human, Mouse, Rat
Host:	Rabbit
Isotype:	IgG
Clonality:	Polyclonal
Immunogen:	WIPI1 antibody was raised against a 17 amino acid synthetic peptide near the carboxy terminus of human WIPI1.
Formulation:	WIPI1 Antibody is supplied in PBS containing 0.02% sodium azide.
Concentration:	1ug/ul
Purification:	WIPI1 Antibody is affinity chromatography purified via peptide column.
Conjugation:	Unconjugated
Storage:	Store at -20°C as received.
Stability:	Stable for 12 months from date of receipt.
Predicted Protein Size:	49 kDa
Gene Name:	WD repeat domain, phosphoinositide interacting 1
Database Link:	NP_060453 Entrez Gene 52639 Mouse Entrez Gene 303630 Rat Entrez Gene 55062 Human Q5MNZ9

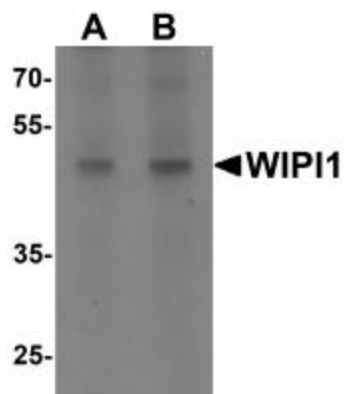
Background: WIPI1 Antibody: WIPI1 (WD repeat domain, phosphoinositide interacting-1), also known as WIPI1, ATG18 or WIPI49, is thought to play a role in autophagy and may regulate protein trafficking in certain recycling pathways. It contains three WD repeats and has a 7-bladed propeller structure with a conserved motif that facilitates its interaction with other proteins. WIPI1 localizes to cytoplasmic vesicles, endosomes, clathrin-coated vesicles and the trans-Golgi network. It is ubiquitously expressed with highest expression in heart, testis, placenta, pancreas and skeletal muscle. WIPI1 is upregulated in a variety of tumors, suggesting a role in carcinogenesis.



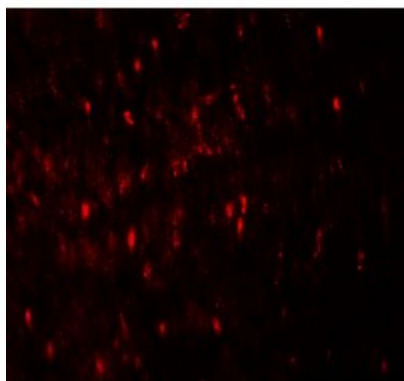
[View online »](#)

Synonyms: ATG18; ATG18A; WIPI49

Product images:



Western blot analysis of WIPI1 in rat colon tissue lysate with WIPI1 antibody at (A) 1 and (B) 2 ug/mL.



Immunofluorescence of WIPI1 in human colon tissue with WIPI1 antibody at 20 ug/mL.