

Product datasheet for **TA319948**

BANP Rabbit Polyclonal Antibody

Product data:

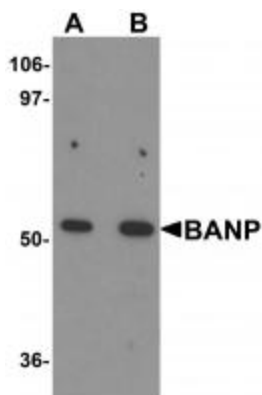
Product Type:	Primary Antibodies
Applications:	IF, IHC, WB
Recommended Dilution:	WB: 1 - 2 ug/mL, ICC: 10 ug/mL, IF: 20 ug/mL
Reactivity:	Human, Mouse, Rat
Host:	Rabbit
Isotype:	IgG
Clonality:	Polyclonal
Immunogen:	BANP antibody was raised against a 14 amino acid synthetic peptide near the center of human BANP.
Formulation:	BANP Antibody is supplied in PBS containing 0.02% sodium azide.
Concentration:	1ug/ul
Purification:	BANP Antibody is affinity chromatography purified via peptide column.
Conjugation:	Unconjugated
Storage:	Store at -20°C as received.
Stability:	Stable for 12 months from date of receipt.
Gene Name:	BTG3 associated nuclear protein
Database Link:	NP_001167014 Entrez Gene 54971 Human Q8N9N5
Background:	BANP Antibody: BANP was initially identified as a binding protein to BTG3 in a yeast two-hybrid screen. BANP acts as a tumor suppressor by stabilizing p53 expression and leading to cell cycle arrest. p53 in turn binds to upstream elements of the BANP promoter, thereby forming a feedback loop. BANP is down-regulated in advanced stages of human breast cancer, and its overexpression in breast cancer cell lines inhibits their ability to metastasize by modulating TGF-beta signaling. Furthermore, BANP can modulate NF-κB transactivation and can inhibit tumorigenesis by regulating NF-κB target genes. Recent experiments have shown that BANP can also repress HIV-1 LTR mediated transcription by tethering the LTR matrix attachment region to nuclear matrix.



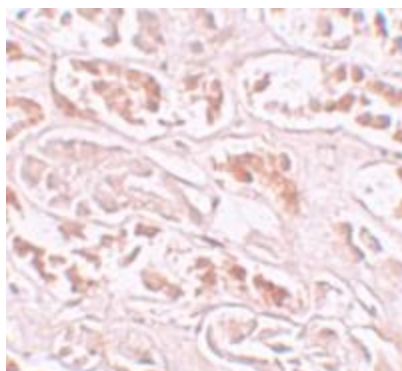
[View online »](#)

Synonyms: BEND1; SMAR1; SMARBP1

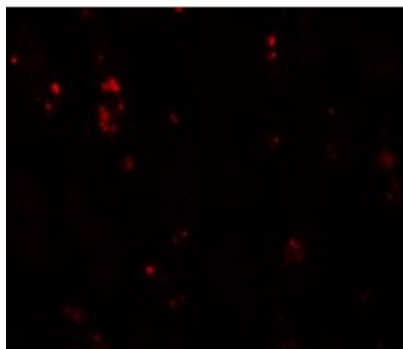
Product images:



Western blot analysis of BANP in mouse kidney tissue lysate with BANP antibody at (A) 1 and (B) 2 ug/mL.



Immunohistochemistry of BANP in human kidney tissue with BANP antibody at 10 ug/mL.



Immunofluorescence of BANP in human kidney tissue with BANP antibody at 20 ug/mL.