

Product datasheet for TA319947

SDHAF2 Chicken Polyclonal Antibody

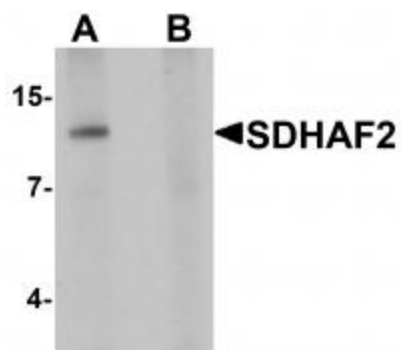
Product data:

Product Type:	Primary Antibodies
Applications:	WB
Recommended Dilution:	WB: 1 ug/mL
Reactivity:	Human, Mouse, Rat
Host:	Chicken
Isotype:	IgY
Clonality:	Polyclonal
Immunogen:	SDHAF2 antibody was raised against a 16 amino acid synthetic peptide near the amino terminus of human SDHAF2.
Formulation:	SDHAF2 Antibody is supplied in PBS containing 0.02% sodium azide.
Concentration:	1ug/ul
Purification:	SDHAF2 Antibody is affinity chromatography purified via peptide column.
Conjugation:	Unconjugated
Storage:	Store at -20°C as received.
Stability:	Stable for 12 months from date of receipt.
Gene Name:	succinate dehydrogenase complex assembly factor 2
Database Link:	NP_060311 Entrez Gene 66072 Mouse Entrez Gene 361726 Rat Entrez Gene 54949 Human Q9NX18
Background:	SDHAF2 Antibody: SDHAF2 (Succinate dehydrogenase complex assembly factor 2) encodes a mitochondrial protein needed for FAD cofactor attach to the SDH enzyme which plays a critical role in mitochondria. SDHAF2 is a tumor suppressor, but recent evidence suggests that somatic mutations of the SDHAF2 are unlikely to contribute to parathyroid tumor development in sporadic primary hyperparathyroidism.
Synonyms:	C11orf79; PGL2; SDH5



[View online »](#)

Product images:



Western blot analysis of SDHAF2 in rat liver tissue lysate with SDHAF2 antibody at 1 ug/mL in (A) the absence and (B) the presence of blocking peptide.