

## Product datasheet for **TA319945**

### **RBM35A (ESRP1) Rabbit Polyclonal Antibody**

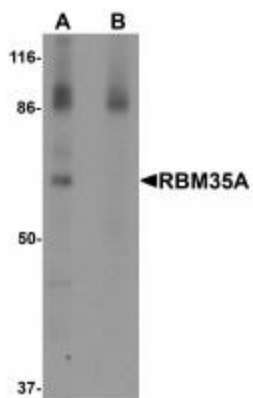
#### **Product data:**

<b>Product Type:</b>	Primary Antibodies
<b>Applications:</b>	IF, IHC, WB
<b>Recommended Dilution:</b>	WB: 0.5 ug/mL, ICC: 2.5 ug/mL, IF: 20 ug/mL
<b>Reactivity:</b>	Human, Mouse, Rat
<b>Host:</b>	Rabbit
<b>Isotype:</b>	IgG
<b>Clonality:</b>	Polyclonal
<b>Immunogen:</b>	RBM35A antibody was raised against a 18 amino acid synthetic peptide near the amino terminus of human RBM35A.
<b>Formulation:</b>	RBM35A Antibody is supplied in PBS containing 0.02% sodium azide.
<b>Concentration:</b>	1ug/ul
<b>Purification:</b>	RBM35A Antibody is affinity chromatography purified via peptide column.
<b>Conjugation:</b>	Unconjugated
<b>Storage:</b>	Store at -20°C as received.
<b>Stability:</b>	Stable for 12 months from date of receipt.
<b>Gene Name:</b>	epithelial splicing regulatory protein 1
<b>Database Link:</b>	<a href="#">NP_001030087</a> <a href="#">Entrez Gene 207920 Mouse</a> <a href="#">Entrez Gene 500409 Rat</a> <a href="#">Entrez Gene 54845 Human</a> <a href="#">Q6NXG1</a>
<b>Background:</b>	RBM35A Antibody: RBM35A, also known as ESRP1, is a mRNA splicing factor that with its related protein RBM35B (ESRP2) are coordinators of an epithelial cell-type-specific splicing program. RBM35A contains three putative RNA recognition motifs and acts by directly binding specific sequences in mRNAs. RBM35A is involved in posttranscriptional regulation of a number of genes such as FGFR2, CD44, CTNND1, and ENAH by exerting a differential effect on protein translation via 5' UTRs of mRNAs. Other recent studies have shown that RMB35A may also act as a novel tumor suppressor.
<b>Synonyms:</b>	RBM35A; RMB35A

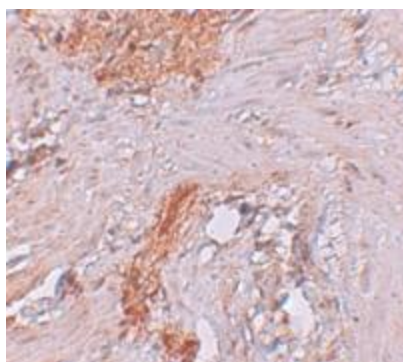


[View online »](#)

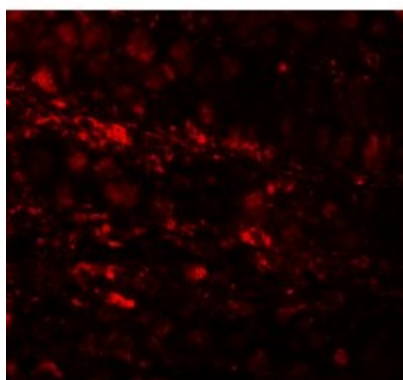
## Product images:



Western blot analysis of RBM35A in rat colon tissue lysate with RBM35A antibody at 0.5 ug/mL in (A) the absence and (B) the presence of blocking peptide.



Immunohistochemistry of RBM35A in human colon tissue with RBM35A antibody at 2.5 ug/mL.



Immunofluorescence of RBM35A in human colon tissue cells with RBM35A antibody at 20 ug/mL.