

## Product datasheet for **TA319944**

### TET2 Rabbit Polyclonal Antibody

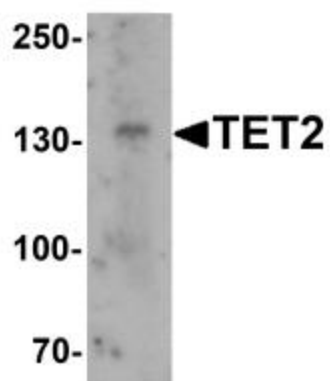
#### Product data:

Product Type:	Primary Antibodies
Applications:	WB
Recommended Dilution:	WB: 1 ug/mL
Reactivity:	Human
Host:	Rabbit
Isotype:	IgG
Clonality:	Polyclonal
Immunogen:	TET2 antibody was raised against an 18 amino acid synthetic peptide near the amino terminus of human TET2.
Formulation:	TET2 Antibody is supplied in PBS containing 0.02% sodium azide.
Concentration:	1ug/ul
Purification:	TET2 Antibody is affinity chromatography purified via peptide column.
Conjugation:	Unconjugated
Storage:	Store at -20°C as received.
Stability:	Stable for 12 months from date of receipt.
Gene Name:	tet methylcytosine dioxygenase 2
Database Link:	<a href="#">NP_001120680</a> <a href="#">Entrez Gene 54790 Human</a> <a href="#">Q6N021</a>
Background:	TET2 Antibody: TET2, a member of the ten-eleven-translocation (TET) family of genes, is a methylcytosine dioxygenase that catalyzes the conversion of methylcytosine to 5-hydroxymethylcytosine. It is a candidate tumor suppressor gene reported to be mutated in approximately 14% of patients with JAK2V617F-positive myeloproliferative neoplasms, and can be mutated in other hematopoietic disorders such as myelodysplastic syndromes, acute myeloid leukemia, and chronic myelomonocytic leukemia. Analysis of the TET2 and JAK2 mutations in these neoplasms suggests that mutations in TET2 do not represent a predisposition for acquiring mutations in JAK2.
Synonyms:	KIAA1546; MDS



[View online »](#)

## Product images:



Western blot analysis of TET2 in SK-N-SH cell lysate with TET2 antibody at 1 ug/mL.