

Product datasheet for **TA319943**

Lymphocyte Antigen 6 Complex (LY6K) Rabbit Polyclonal Antibody

Product data:

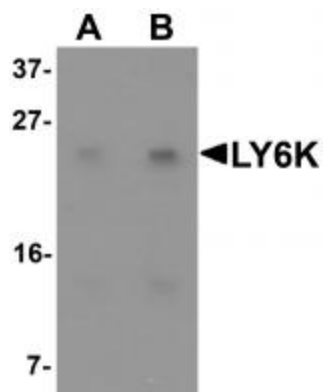
Product Type:	Primary Antibodies
Applications:	WB
Recommended Dilution:	WB: 1 - 2 ug/mL
Reactivity:	Human, Mouse, Rat
Host:	Rabbit
Isotype:	IgG
Clonality:	Polyclonal
Immunogen:	LY6K antibody was raised against an 18 amino acid synthetic peptide near the amino terminus of human LY6K.
Formulation:	LY6K Antibody is supplied in PBS containing 0.02% sodium azide.
Concentration:	1ug/ul
Purification:	LY6K Antibody is affinity chromatography purified via peptide column.
Conjugation:	Unconjugated
Storage:	Store at -20°C as received.
Stability:	Stable for 12 months from date of receipt.
Gene Name:	lymphocyte antigen 6 complex, locus K
Database Link:	NP_059997 Entrez Gene 76486 Mouse Entrez Gene 100363492 Rat Entrez Gene 54742 Human Q17RY6
Background:	LY6K Antibody: The lymphocyte antigen 6 complex locus K (LY6K), a member of cancer-testis antigen was initially identified as a molecular marker for head-and-neck squamous cell carcinoma as well a breast cancer. LY6K is a GPI-anchored membrane protein that is specifically associated with germ cell marker TEX101 and is strongly observed in testis, but only weakly in other tissues. LY6K mRNA was found to be upregulated in numerous bladder cancers due to gene amplification. Furthermore, knockdown experiments using LY6K siRNA reduced cell growth, migration and invasion in bladder carcinoma cell lines, suggesting that LY6K contributes to bladder cancer development.
Synonyms:	CT97; HSJ001348; ly-6K; URLC10



[View online »](#)

Protein Families: Transmembrane

Product images:



Western blot analysis of LY6K in HeLa cell lysate with LY6K antibody at (A) 1 and (B) 2 ug/mL.