

## Product datasheet for TA319941

### L1TD1 Rabbit Polyclonal Antibody

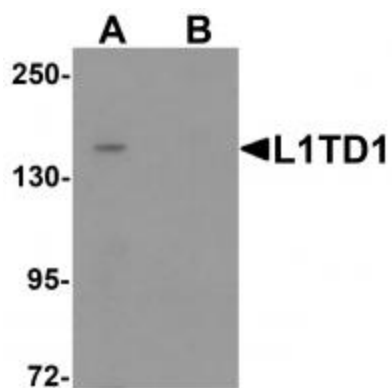
#### Product data:

Product Type:	Primary Antibodies
Applications:	WB
Recommended Dilution:	WB: 1 ug/mL
Reactivity:	Human
Host:	Rabbit
Isotype:	IgG
Clonality:	Polyclonal
Immunogen:	L1TD1 antibody was raised against a 17 amino acid synthetic peptide near the carboxy terminus of human L1TD1.
Formulation:	L1TD1 Antibody is supplied in PBS containing 0.02% sodium azide.
Concentration:	1ug/ul
Purification:	L1TD1 Antibody is affinity chromatography purified via peptide column.
Conjugation:	Unconjugated
Storage:	Store at -20°C as received.
Stability:	Stable for 12 months from date of receipt.
Gene Name:	LINE-1 type transposase domain containing 1
Database Link:	<a href="#">NP_061952</a> <a href="#">Entrez Gene 54596 Human</a> <a href="#">Q5T7N2</a>
Background:	L1TD1 Antibody: L1TD1 (ECAT11) is a member of the family of Embryonic Stem Cell Associated Transcripts (ECAT) that play an important role in stem cell biology. ECAT4 (Nanog) is a master regulator for the maintenance of mESC and hESC. ECAT5 was identified to be Embryonic stem cell expressed Ras (ERas), a Ras-like oncogene that is important in regulating mESC proliferation. ECAT9 (GDF3) is an important factor that helps maintain mESC pluripotency by inhibiting bone morphogenetic protein (BMP) signaling. L1TD1 is highly enriched in undifferentiated hESC and L1TD1 is a target gene of Nanog.
Synonyms:	ECAT11



[View online »](#)

## Product images:



Western blot analysis of L1TD1 in Jurkat cell lysate with L1TD1 antibody at 1 ug/mL in (A) the absence and (B) the presence of blocking peptide.