

## Product datasheet for **TA319940**

### SPATA6 Rabbit Polyclonal Antibody

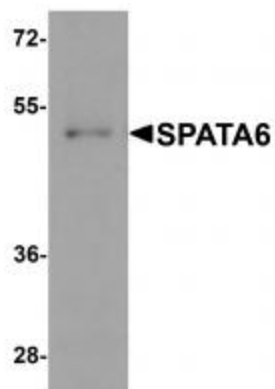
#### Product data:

Product Type:	Primary Antibodies
Applications:	IF, IHC, WB
Recommended Dilution:	WB: 1 ug/mL, ICC: 2.5 ug/mL, IF: 20 ug/mL
Reactivity:	Human, Mouse, Rat
Host:	Rabbit
Isotype:	IgG
Clonality:	Polyclonal
Immunogen:	SPATA6 antibody was raised against a 14 amino acid synthetic peptide near the carboxy terminus of human SPATA6.
Formulation:	SPATA6 Antibody is supplied in PBS containing 0.02% sodium azide.
Concentration:	1ug/ul
Purification:	SPATA6 Antibody is affinity chromatography purified via peptide column.
Conjugation:	Unconjugated
Storage:	Store at -20°C as received.
Stability:	Stable for 12 months from date of receipt.
Gene Name:	spermatogenesis associated 6
Database Link:	<a href="#">NP_061946</a> <a href="#">Entrez Gene 67946 Mouse</a> <a href="#">Entrez Gene 171413 Rat</a> <a href="#">Entrez Gene 54558 Human</a> <a href="#">Q9NWH7</a>
Background:	SPATA6 Antibody: The development of spermatogonial stem cells into spermatozoa, i.e., spermatogenesis, is a highly ordered process that requires multiple proteins, including some that are testis-specific or testis-specific isoforms of genes that are expressed in other tissues. One such protein is SPATA6: while its full-length isoform is expressed in multiple tissues including thymus, brain and testis, the shorter isoform is expressed only in testis. It has some homology to the motor domain of kinesin related proteins and with the C. elegans neural calcium sensor protein NCS-2.
Synonyms:	HASH; SRF-1; SRF1
Protein Families:	Secreted Protein

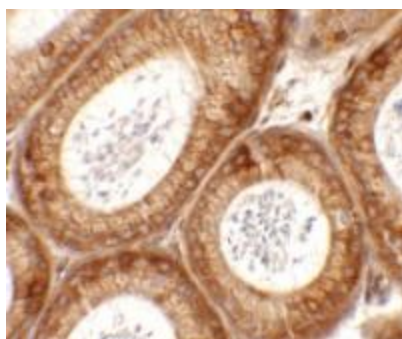


[View online »](#)

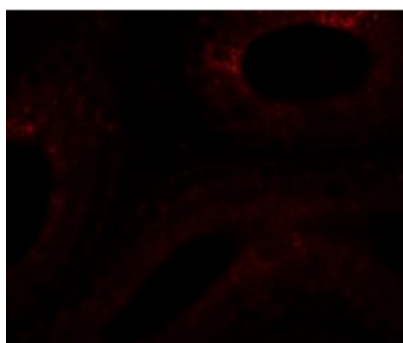
## Product images:



Western blot analysis of SPATA6 in A20 cell lysate with SPATA6 antibody at 1 ug/mL.



Immunohistochemistry of SPATA6 in mouse testis tissue with SPATA6 antibody at 2.5 ug/mL.



Immunofluorescence of SPATA6 in mouse testis tissue with SPATA6 antibody at 20 ug/mL.