

## Product datasheet for **TA319938**

### TREM1 Rabbit Polyclonal Antibody

#### Product data:

Product Type:	Primary Antibodies
Applications:	WB
Recommended Dilution:	WB: 1 - 2 ug/mL
Reactivity:	Human
Host:	Rabbit
Isotype:	IgG
Clonality:	Polyclonal
Immunogen:	Rabbit polyclonal TREM1 antibody was raised against a 17 amino acid peptide near the amino terminus of human TREM1.
Formulation:	TREM1 Antibody is supplied in PBS containing 0.02% sodium azide.
Concentration:	1ug/ul
Purification:	TREM1 Antibody is affinity chromatography purified via peptide column.
Conjugation:	Unconjugated
Storage:	Antibody can be stored at 4°C up to one year. Antibodies should not be exposed to prolonged high temperatures.
Stability:	Stable for 12 months from date of receipt.
Predicted Protein Size:	26 kDa
Gene Name:	triggering receptor expressed on myeloid cells 1
Database Link:	<a href="#">NP_061113</a> <a href="#">Entrez Gene 54210 Human</a> <a href="#">Q9NP99</a>
Background:	TREM1 Antibody: TREM1 (triggering receptor expressed on myeloid cells 1) is a receptor belonging to the Ig superfamily that amplifies neutrophil and monocyte-mediated inflammatory responses triggered by bacterial and fungal infections by stimulating release of pro-inflammatory chemokines and cytokines, as well as increased surface expression of cell activation markers. It is thought that TREM1 other related TREM proteins such as TREM2 act to modulate the inflammatory response. TREM1 has also been linked to inflammatory bowel disease resulting in enhanced production of TNF, IL-6, IL-8, and MCP-1.

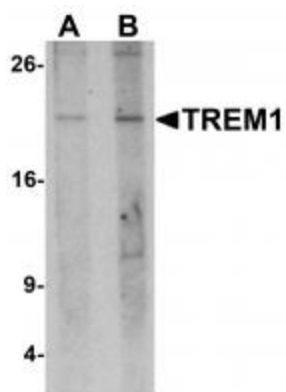


[View online »](#)

Synonyms: CD354; TREM-1

Protein Families: Druggable Genome, Secreted Protein, Transmembrane

### Product images:



Western blot analysis of TREM1 in 293 cell lysate with TREM1 antibody at (A) 1 and (B) 2 ug/mL.