

Product datasheet for **TA319935**

CD244 Rabbit Polyclonal Antibody

Product data:

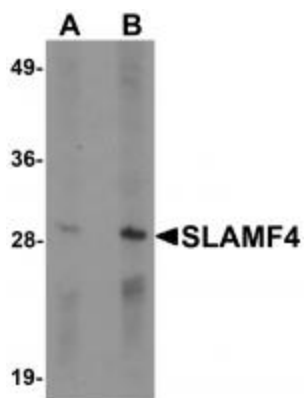
Product Type:	Primary Antibodies
Applications:	IF, WB
Recommended Dilution:	WB: 1 - 2 ug/mL, IF: 20 ug/mL
Reactivity:	Human, Mouse, Rat
Host:	Rabbit
Isotype:	IgG
Clonality:	Polyclonal
Immunogen:	SLAMF4 antibody was raised against a 16 amino acid synthetic peptide near the carboxy terminus of human SLAMF4.
Formulation:	SLAMF4 Antibody is supplied in PBS containing 0.02% sodium azide.
Concentration:	1ug/ul
Purification:	SLAMF4 Antibody is affinity chromatography purified via peptide column.
Conjugation:	Unconjugated
Storage:	Store at -20°C as received.
Stability:	Stable for 12 months from date of receipt.
Gene Name:	CD244 molecule
Database Link:	NP_001160135 Entrez Gene 18106 Mouse Entrez Gene 64025 Rat Entrez Gene 51744 Human Q9BZW8
Background:	SLAMF4 Antibody: The signaling lymphocyte-activation molecule family member 4 (SLAMF4), also known as 2B4, is an important regulator of Natural Killer (NK) cell activation. It is expressed on NK cells as well as on subsets of T cells and interacts with SLAMF2, causing the activation of both SLAMF4- and SLAMF2-expressing cells. Patients with systemic lupus erythmatosus have lower than normal levels of SLAMF4 expressed on their NK cells and monocytes, suggesting that SLAMF4 may play a role in this autoimmune disease.
Synonyms:	2B4; NAIL; NKR2B4; Nmrk; SLAMF4
Protein Families:	Druggable Genome, ES Cell Differentiation/IPS, Transmembrane



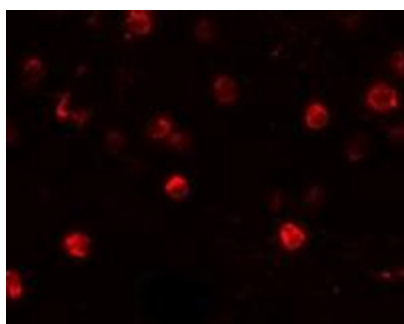
[View online »](#)

Protein Pathways: Natural killer cell mediated cytotoxicity

Product images:



Western blot analysis of SLAMF4 in Daudi cell lysate with SLAMF4 antibody at (A) 1 and (B) 2 ug/mL.



Immunofluorescence of SLAMF4 in Daudi cells with SLAMF4 antibody at 20 ug/mL.