

Product datasheet for TA319934

YPEL5 Rabbit Polyclonal Antibody

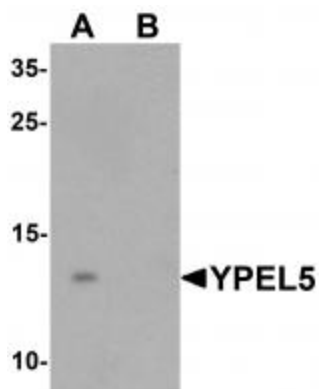
Product data:

Product Type:	Primary Antibodies
Applications:	IF, WB
Recommended Dilution:	WB: 1 ug/mL
Reactivity:	Human, Mouse
Host:	Rabbit
Isotype:	IgG
Clonality:	Polyclonal
Immunogen:	YPEL5 antibody was raised against a 14 amino acid synthetic peptide near the amino terminus of human YPEL5.
Formulation:	YPEL5 Antibody is supplied in PBS containing 0.02% sodium azide.
Concentration:	1ug/ul
Purification:	YPEL5 Antibody is affinity chromatography purified via peptide column.
Conjugation:	Unconjugated
Storage:	Store at -20°C as received.
Stability:	Stable for 12 months from date of receipt.
Gene Name:	yippee like 5
Database Link:	NP_057145 Entrez Gene 51646 Human P62699
Background:	YPEL5 Antibody: YPEL5 (yippee-like 5) belongs to a family of five yippee-like proteins, all of which localize to the centrosome or mitotic spindle and are widely expressed in both adult and fetal tissue. This localization plus the fact that the family of human YPEL proteins share a high degree of sequence homology across species suggests that these proteins may have a conserved function involved in cell division. YPEL5 is expressed at the nucleus and centrosome during interphase; during mitosis, it localizes to the spindle poles, mitotic spindle, and spindle midzone during mitosis. Finally, during cytokinesis, YPEL5 is localized to the midbody. It is associated with the Ran Binding Protein in the Microtubule organizing center (RanBPM) and a related protein RanBP10.

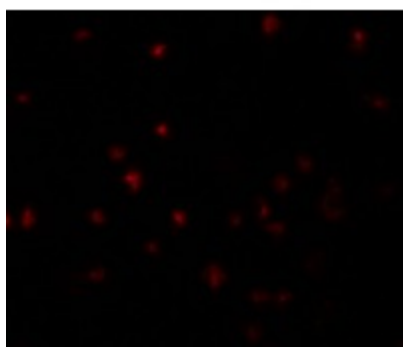

[View online »](#)

Synonyms: CGI-127

Product images:



Western blot analysis of YPEL5 in A-20 cell lysate with YPEL5 antibody at 1 ug/mL in (A) the absence and (B) the presence of blocking peptide.



Immunofluorescence of YPEL5 in A20 cells with YPEL5 antibody at 5 ug/mL.



Immunocytochemistry of YPEL5 in A20 cells with YPEL5 antibody at 2.5 ug/mL.