

Product datasheet for TA319929

PPHLN1 Rabbit Polyclonal Antibody

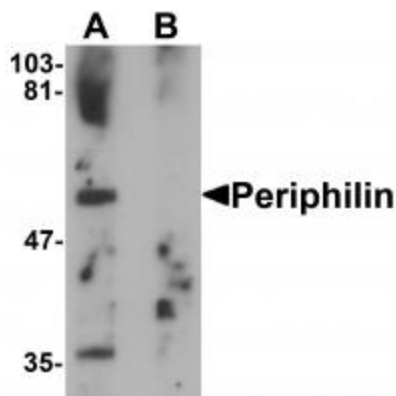
Product data:

Product Type:	Primary Antibodies
Applications:	IF, IHC, WB
Recommended Dilution:	WB: 1 ug/mL, ICC: 2.5 ug/mL, IF: 5 ug/mL
Reactivity:	Human, Mouse
Host:	Rabbit
Isotype:	IgG
Clonality:	Polyclonal
Immunogen:	Periphilin antibody was raised against a 16 amino acid synthetic peptide near the center of human Periphilin.
Formulation:	Periphilin Antibody is supplied in PBS containing 0.02% sodium azide.
Concentration:	1ug/ul
Purification:	Periphilin Antibody is affinity chromatography purified via peptide column.
Conjugation:	Unconjugated
Storage:	Store at -20°C as received.
Stability:	Stable for 12 months from date of receipt.
Gene Name:	periphilin 1
Database Link:	NP_958848 Entrez Gene 51535 Human Q8NEY8
Background:	Periphilin Antibody: Periphilin, known as PPHLN1 or gastric cancer antigen Ga50, plays a role in epithelial differentiation and contributes to epidermal integrity and barrier formation. It interacts with periplakin, a known precursor of the cornified cell envelope. Periphilin 1 is ubiquitously expressed and localizes to nucleus and cytoplasm. Existing as eight alternatively spliced isoforms, Periphilin is highly insoluble and contains a putative nuclear localization signal (NLS) within its N-terminal half, a prerequisite for the formation of insoluble complexes and a possible caspase recognition sequence and a potential nuclear export signal. Periphilin may play an important role in the nervous system.
Synonyms:	CR; HSPC206; HSPC232

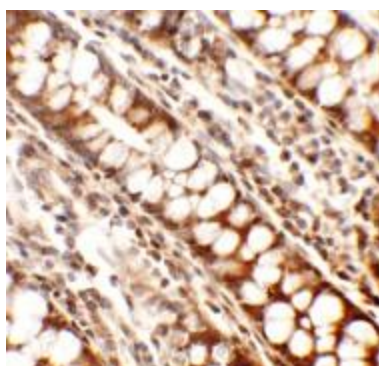


[View online »](#)

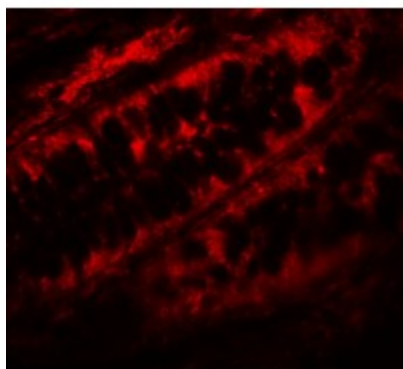
Product images:



Western blot analysis of Periphilin in mouse colon tissue lysate with Periphilin antibody at 1 ug/mL in (A) the absence and (B) the presence of blocking peptide.



Immunohistochemistry of Periphilin in human colon tissue with Periphilin antibody at 2.5 ug/mL.



Immunofluorescence of Periphilin in human colon tissue with Periphilin antibody at 5 ug/mL.