

## Product datasheet for **TA319927**

### CXXC5 Rabbit Polyclonal Antibody

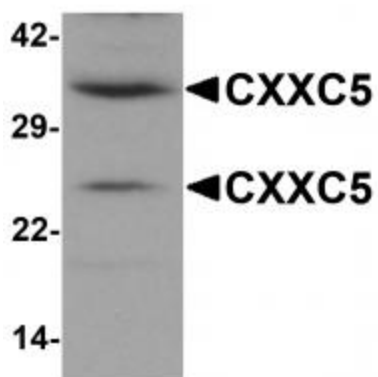
#### Product data:

Product Type:	Primary Antibodies
Applications:	IF, IHC, WB
Recommended Dilution:	WB: 1 ug/mL, ICC: 2.5 ug/mL, IF: 20 ug/mL
Reactivity:	Human, Mouse, Rat
Host:	Rabbit
Isotype:	IgG
Clonality:	Polyclonal
Immunogen:	CXXC5 antibody was raised against a 15 amino acid synthetic peptide near the amino terminus of human CXXC5.
Formulation:	CXXC5 Antibody is supplied in PBS containing 0.02% sodium azide.
Concentration:	1ug/ul
Purification:	CXXC5 Antibody is affinity chromatography purified via peptide column.
Conjugation:	Unconjugated
Storage:	Store at -20°C as received.
Stability:	Stable for 12 months from date of receipt.
Gene Name:	CXXC finger protein 5
Database Link:	<a href="#">NP_057547</a> <a href="#">Entrez Gene 67393 Mouse</a> <a href="#">Entrez Gene 291670 Rat</a> <a href="#">Entrez Gene 51523 Human</a> <a href="#">Q7LFL8</a>
Background:	CXXC5 Antibody: CXXC5 is zinc finger protein closely related to the DVL1-binding protein CXXC4 (also known as Idax), and like CXXC4 is thought to modulate the Wnt signaling pathway during development. CXXC5 is upregulated in neural stem cells upon BMP4 stimulation, leading to decreased levels of the Wnt-signaling target AXIN2 and facilitated the response of the stem cells to Wnt3a. Recent reports suggest CXXC5 transcription is activated by the Wilms tumor 1 (WT1) transcription factor, and together are involved in the WNT/beta-catenin pathway and play a role in embryonic kidney development.
Synonyms:	CF5; HSPC195; RINF; WID

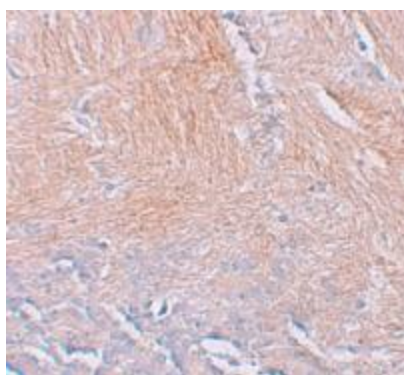


[View online »](#)

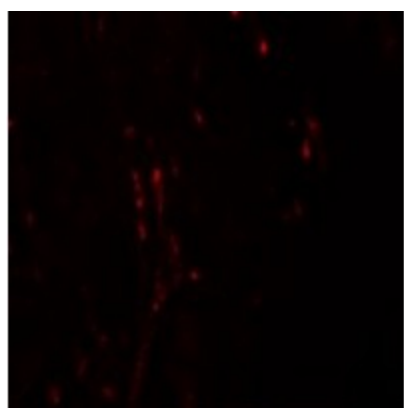
## Product images:



Western blot analysis of CXXC5 in human brain tissue lysate with CXXC5 antibody at 1 ug/mL.



Immunohistochemistry of CXXC5 in human brain tissue with CXXC5 antibody at 2.5 ug/mL.



Immunofluorescence of CXXC5 in Human Brain tissue with CXXC5 antibody at 20 ug/mL.