

Product datasheet for **TA319922**

PLA1A Rabbit Polyclonal Antibody

Product data:

Product Type:	Primary Antibodies
Applications:	IF, WB
Recommended Dilution:	WB: 1 - 2 ug/mL, IF: 20 ug/mL
Reactivity:	Human, Rat
Host:	Rabbit
Isotype:	IgG
Clonality:	Polyclonal
Immunogen:	PLA1A antibody was raised against a 17 amino acid synthetic peptide near the carboxy terminus of human PLA1A.
Formulation:	PLA1A Antibody is supplied in PBS containing 0.02% sodium azide.
Concentration:	1ug/ul
Purification:	PLA1A Antibody is affinity chromatography purified via peptide column.
Conjugation:	Unconjugated
Storage:	Store at -20°C as received.
Stability:	Stable for 12 months from date of receipt.
Predicted Protein Size:	50 kDa
Gene Name:	phospholipase A1 member A
Database Link:	NP_056984 Entrez Gene 85311 Rat Entrez Gene 51365 Human Q53H76



[View online »](#)

Background:

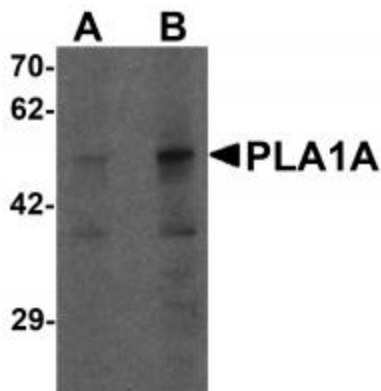
PLA1A Antibody: PLA1A is a phospholipase that hydrolyzes fatty acids at the sn-1 position of phosphatidylserine and 1-acyl-2-lysophosphatidylserine. This secreted protein hydrolyzes phosphatidylserine (PS) in liposomes and can also hydrolyze PS in apoptotic cells and activate platelets where the resulting 2-acyl-lysophosphatidylserine acts as a lipid mediator for mast cells, T cells, and neural cells, suggesting that a major function of PLA1A may be the production of lysophospholipid mediators. PLA1A is upregulated in rat peripheral blood cells bearing long-term surviving cardiac allograft. PLA1A is also expressed in human THP-1-derived macrophages and this expression is upregulated in cells treated with lipopolysaccharide, a TLR4 ligand. This upregulation is inhibited with corticosteroids, which are often used at high dosages to suppress chronic allograft rejection.

Synonyms:

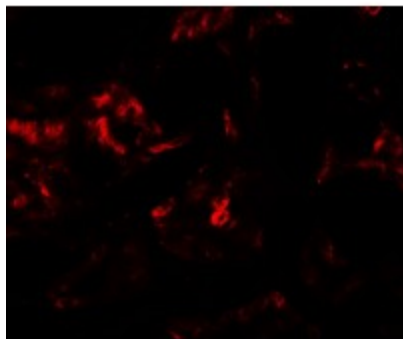
PS-PLA1; PSPLA1

Protein Families:

Druggable Genome, Secreted Protein

Product images:

Western blot analysis of PLA1A in human kidney tissue lysate with PLA1A antibody at (A) 1 and (B) 2 ug/mL.



Immunofluorescence of PLA1A in human kidney tissue with PLA1A antibody at 20 ug/mL.