

Product datasheet for **TA319921**

Pokemon (ZBTB7A) Rabbit Polyclonal Antibody

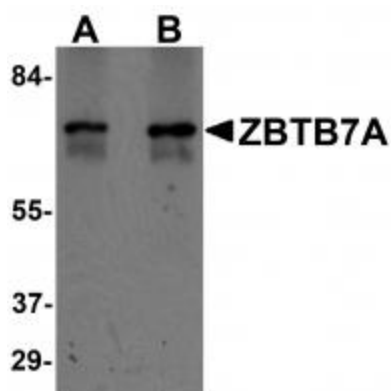
Product data:

Product Type:	Primary Antibodies
Applications:	IF, IHC, WB
Recommended Dilution:	WB: 1 - 2 ug/mL, ICC: 2.5 ug/mL, IF: 20 ug/mL
Reactivity:	Human, Mouse
Host:	Rabbit
Isotype:	IgG
Clonality:	Polyclonal
Immunogen:	ZBTB7A antibody was raised against a 16 amino acid synthetic peptide near the amino terminus of human ZBTB7A.
Formulation:	ZBTB7A Antibody is supplied in PBS containing 0.02% sodium azide.
Concentration:	1ug/ul
Purification:	ZBTB7A Antibody is affinity chromatography purified via peptide column.
Conjugation:	Unconjugated
Storage:	Store at -20°C as received.
Stability:	Stable for 12 months from date of receipt.
Gene Name:	zinc finger and BTB domain containing 7A
Database Link:	AAH84568 Entrez Gene 51341 Human O95365
Background:	ZBTB7A Antibody: The ZBTB family of proteins is comprised of diverse zinc finger proteins that also contain a BTB (BR-C, ttk and bab) domain. ZBTB7A, also known as LRF, was initially identified as a potential target of the LAZ-3/BCL-6 oncogene. Later reports demonstrated that it could bind to the wild-type IST (inducer of short transcripts) elements of HIV-1 long terminal repeats (LTRs) and stimulate Tat activity on the HIV-1 LTR. More recently it ZBTB7A has been recognized as a proto-oncogene whose overexpression contributes to malignancy in breast cancer and functions as a co-repressor of the androgen receptor in prostate cancer cells.
Synonyms:	FBI-1; FBI1; LRF; pokemon; TIP21; ZBTB7; ZNF857A

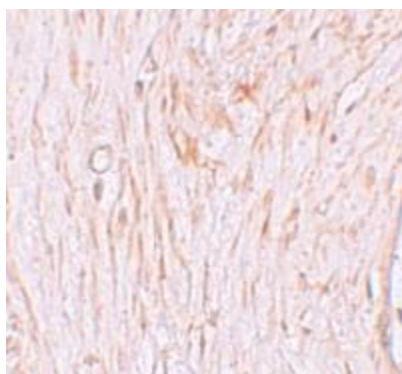


[View online »](#)

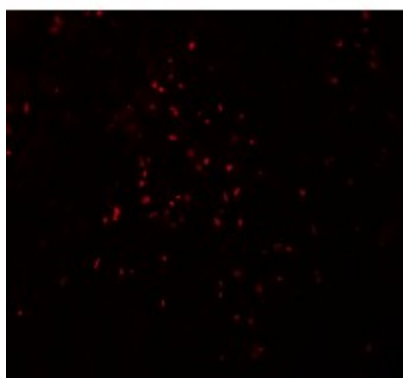
Product images:



Western blot analysis of ZBTB7A in human ovary tissue lysate with ZBTB7A antibody at (A) 1 and (B) 2 ug/mL.



Immunohistochemistry of ZBTB7A in human ovary tissue with ZBTB7A antibody at 2.5 ug/mL.



Immunofluorescence of ZBTB7A in human ovary tissue with ZBTB7A antibody at 20 ug/mL.