

## Product datasheet for **TA319919**

### TLR8 Rabbit Polyclonal Antibody

#### Product data:

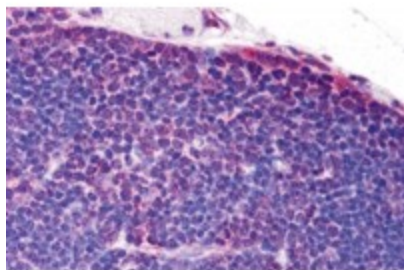
Product Type:	Primary Antibodies
Applications:	IHC
Recommended Dilution:	IHC: 5 ug/mL
Reactivity:	Human
Host:	Rabbit
Isotype:	IgG
Clonality:	Polyclonal
Immunogen:	TLR8 antibody was raised against a 15 amino acid synthetic peptide near the carboxy terminus of human TLR8. The immunogen is located within the last 50 amino acids of TLR8.
Formulation:	TLR8 Antibody is supplied in PBS containing 0.02% sodium azide.
Concentration:	1ug/ul
Purification:	TLR8 Antibody is affinity chromatography purified via peptide column.
Conjugation:	Unconjugated
Storage:	Store at -20°C as received.
Stability:	Stable for 12 months from date of receipt.
Gene Name:	toll like receptor 8
Database Link:	<a href="#">NP_619542</a> <a href="#">Entrez Gene 51311 Human</a> <a href="#">Q9NR97</a>
Background:	TLR8 Antibody: Toll-like receptors (TLRs) are signaling molecules that recognize different microbial products during infection and serve as an important link between the innate and adaptive immune responses. These proteins act through adaptor molecules such as MyD88 and TIRAP to activate various kinases and transcription factors. Like TLR7, TLR8 is localized to endosomal or lysosomal compartments and stimulates the innate immune response after activation by guanosine- and uridine-rich single-stranded RNA. Human but not murine TLR8 confers responsiveness to the antiviral compound R-848.
Synonyms:	CD288
Protein Families:	Druggable Genome, Transmembrane



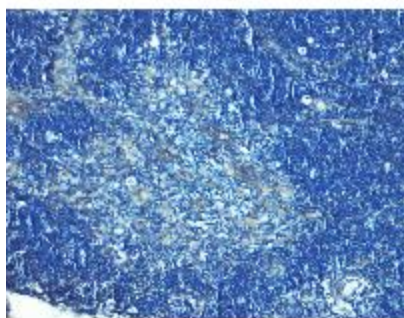
[View online »](#)

Protein Pathways: Toll-like receptor signaling pathway

**Product images:**



Immunohistochemistry of TLR8 in human thymus tissue with TLR8 antibody at 5ug/ml.



Immunohistochemistry of TLR8 in mouse thymus tissue with TLR8 Antibody at 5ug/ml.