

## Product datasheet for **TA319917**

### CRIM1 Rabbit Polyclonal Antibody

#### Product data:

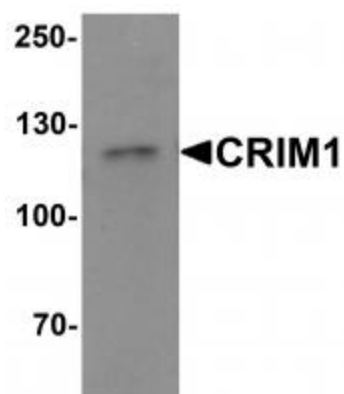
Product Type:	Primary Antibodies
Applications:	IF, WB
Recommended Dilution:	WB: 1 ug/mL, IF: 20 ug/mL
Reactivity:	Human
Host:	Rabbit
Isotype:	IgG
Clonality:	Polyclonal
Immunogen:	CRIM1 antibody was raised against a 17 amino acid synthetic peptide near the carboxy terminus of human Crim1.
Formulation:	CRIM1 Antibody is supplied in PBS containing 0.02% sodium azide.
Concentration:	1ug/ul
Purification:	CRIM1 Antibody is affinity chromatography purified via peptide column.
Conjugation:	Unconjugated
Storage:	Store at -20°C as received.
Stability:	Stable for 12 months from date of receipt.
Gene Name:	cysteine rich transmembrane BMP regulator 1 (chordin-like)
Database Link:	<a href="#">NP_057525</a> <a href="#">Entrez Gene 51232 Human</a> <a href="#">Q9NZV1</a>
Background:	CRIM1 Antibody: CRIM1 (cysteine-rich motor neuron 1), a glycosylated type I transmembrane protein, plays a role in tissue development i.e. capillary formation and maintenance during angiogenesis. It contains an N-terminal IGF-binding protein-like motif and six von Willebrand-like cysteine-rich repeats (CRRs) in its extracellular domain. CRIM1 interacts with BMP4 and BMP7 via the CRRs and functions as an antagonist. CRIM1 is developmentally expressed in a number of tissues including the pancreas, kidney, placenta, brain and blood vessels. CRIM1 may participate in CNS and placental development by interacting with growth factors involved in motor neuron differentiation and survival.
Synonyms:	CRIM-1; S52



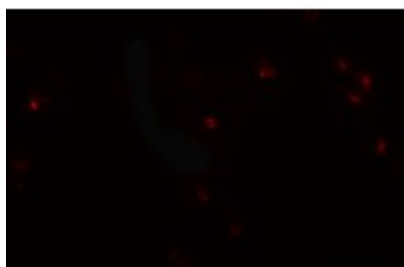
[View online »](#)

Protein Families: Druggable Genome, Secreted Protein, Transmembrane

### Product images:



Western blot analysis of CRIM1 in Jurkat cell lysate with Crim1 antibody at 1 ug/mL.



Immunofluorescence of CRIM1 in Jurkat cells with CRIM1 antibody at 20 ug/mL.