

## Product datasheet for **TA319914**

### SIDT2 Rabbit Polyclonal Antibody

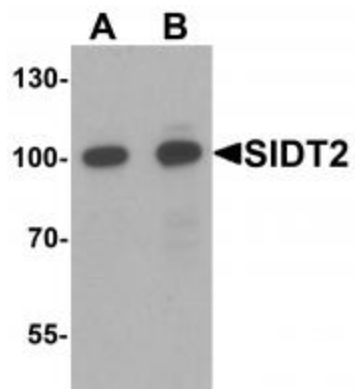
#### Product data:

Product Type:	Primary Antibodies
Applications:	WB
Recommended Dilution:	WB: 0.5 - 1 ug/mL
Reactivity:	Human, Mouse, Rat
Host:	Rabbit
Isotype:	IgG
Clonality:	Polyclonal
Immunogen:	Rabbit polyclonal SIDT2 antibody was raised against an 18 amino acid peptide near the amino terminus of human SIDT2.
Formulation:	SIDT2 Antibody is supplied in PBS containing 0.02% sodium azide.
Purification:	SIDT2 Antibody is affinity chromatography purified via peptide column.
Conjugation:	Unconjugated
Storage:	Store at -20°C as received.
Stability:	Stable for 12 months from date of receipt.
Predicted Protein Size:	92 kDa
Gene Name:	SID1 transmembrane family member 2
Database Link:	<a href="#">NP_001035545</a> <a href="#">Entrez Gene 51092 Human</a> <a href="#">Q8NBJ9</a>
Background:	SIDT2 Antibody: The SID1 transmembrane family member (SIDT2) is a highly glycosylated, multipass transmembrane protein that localizes to the lysosomal membrane. SIDT2 is highly expressed in liver, brain and kidney, with no or little expression in skeletal muscles, heart or other tissues. Little is known of the function of SIDT2.
Synonyms:	B930096O19; BC023957; CGI-40; FLJ90656; member 2; MGC36407; MGC58967; SID1 transmembrane family



[View online »](#)

## Product images:



Western blot analysis of SIDT2 in mouse brain tissue lysate with SIDT2 antibody at (A) 0.5 and (B) 1 ug/mL.