

Product datasheet for **TA319913**

YBX2 Rabbit Polyclonal Antibody

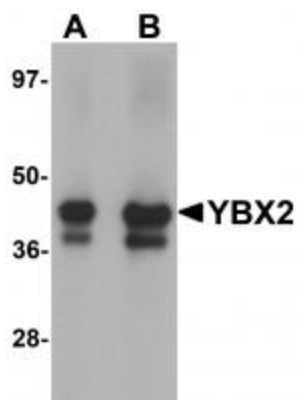
Product data:

Product Type:	Primary Antibodies
Applications:	IF, IHC, WB
Recommended Dilution:	WB: 1 - 2 ug/mL, ICC: 10 ug/mL, IF: 20 ug/mL
Reactivity:	Human, Mouse, Rat
Host:	Rabbit
Isotype:	IgG
Clonality:	Polyclonal
Immunogen:	YBX2 antibody was raised against an 18 amino acid synthetic peptide near the carboxy end of human YBX2.
Formulation:	YBX2 Antibody is supplied in PBS containing 0.02% sodium azide.
Concentration:	1ug/ul
Purification:	YBX2 Antibody is affinity chromatography purified via peptide column.
Conjugation:	Unconjugated
Storage:	Store at -20°C as received.
Stability:	Stable for 12 months from date of receipt.
Gene Name:	Y-box binding protein 2
Database Link:	NP_057066 Entrez Gene 53422 Mouse Entrez Gene 303250 Rat Entrez Gene 51087 Human Q9Y2T7
Background:	YBX2 Antibody: Germ cell specific Y-box binding protein (YBX2), a germ-cell-specific member of the Y-box family of DNA-/RNA-binding proteins, is a major constituent of messenger ribonucleoprotein particles (mRNPs) and involved in the regulation of the stability and/or translation of germ cell mRNAs. It is proposed to function as a coactivator of transcription in the nucleus and to stabilize and store maternal and paternal mRNAs in the cytoplasm. YBX2 binds to the Y-box consensus promoter element and is expressed in oocytes and testicular germ cells in the stage of spermatogonia to spermatocyte. Recent studies show that deletion of YBX2 leads to the disruption of both spermatogenesis and oogenesis.
Synonyms:	CONTRIN; CSDA3; DBPC; MSY2

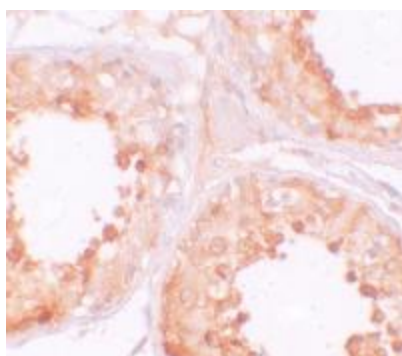


[View online »](#)

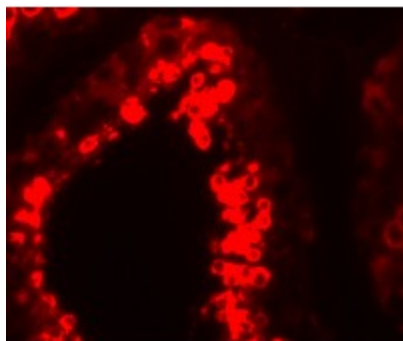
Product images:



Western blot analysis of YBX2 in human testis tissue lysate with YBX2 antibody at (A) 1 and (B) 2 ug/mL.



Immunohistochemistry of YBX2 in human testis tissue with YBX2 antibody at 10 ug/mL.



Immunofluorescence of YBX2 in human testis tissue with YBX2 antibody at 20 ug/mL.