

## Product datasheet for **TA319912**

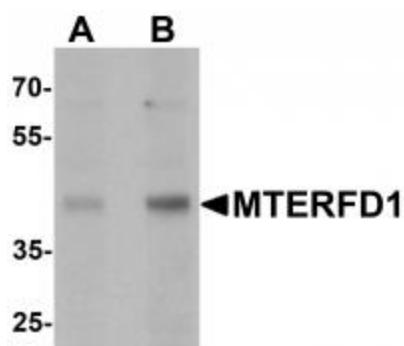
### **MTERFD1 (MTERF3) Rabbit Polyclonal Antibody**

#### **Product data:**

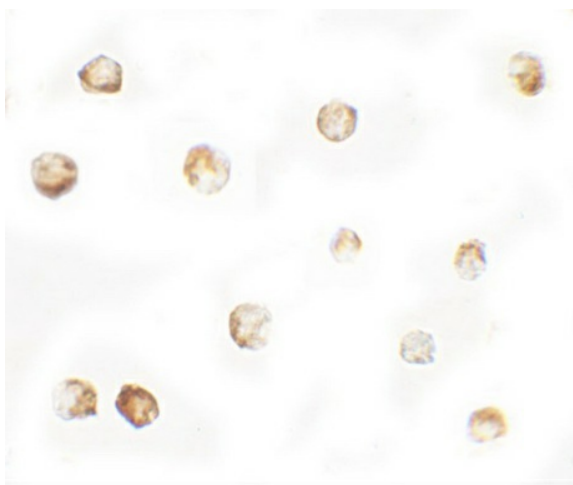
Product Type:	Primary Antibodies
Applications:	IF, WB
Recommended Dilution:	WB: 1 ug/mL, ICC: 5 ug/mL, IF: 20 ug/mL
Reactivity:	Human, Mouse
Host:	Rabbit
Isotype:	IgG
Clonality:	Polyclonal
Immunogen:	MTERFD1 antibody was raised against a 17 amino acid peptide near the carboxy terminus of human MTERFD1 .
Formulation:	MTERFD1 Antibody is supplied in PBS containing 0.02% sodium azide.
Concentration:	1ug/ul
Purification:	MTERFD1 Antibody is affinity chromatography purified via peptide column.
Conjugation:	Unconjugated
Storage:	Store at -20°C as received.
Stability:	Stable for 12 months from date of receipt.
Predicted Protein Size:	Predicted: 46 kDa; Observed: 42 kDa
Gene Name:	mitochondrial transcription termination factor 3
Database Link:	<a href="#">NP_057026</a> <a href="#">Entrez Gene 66410 Mouse</a> <a href="#">Entrez Gene 51001 Human</a> <a href="#">Q96E29</a>
Background:	MTERFD1 Antibody: Members of the mTERF (mitochondrial transcription termination factor) family, are mitochondrial proteins that are believed to be transcription termination factors. MTERFD1 is composed of three leucine zippers that form a three-stranded coiled-coil that binds to DNA. It binds promoter DNA and acts as a mitochondrial transcription regulator. It has been suggested that only the phosphorylated form of MTERFD1 has transcription termination activity. A closely related mTERF family member, MTERFD3, is believed to be involved in cell cycle regulation and cell growth by modulating mitochondrial transcription.
Synonyms:	CGI-12; MTERFD1



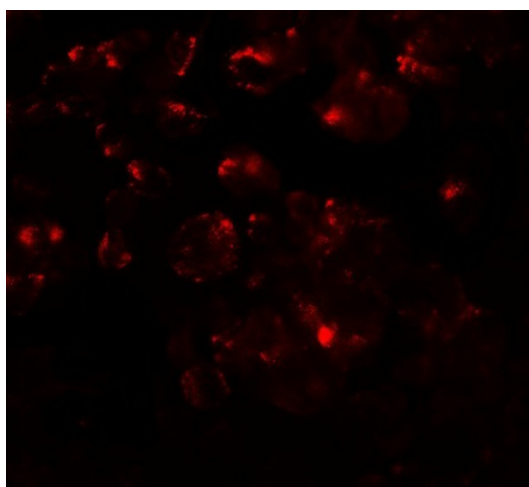
[View online »](#)

**Product images:**


Western blot analysis of MTERFD1 in 3T3 cell lysate with MTERFD1 antibody at (A) 1 and (B) 2 ug/mL.



Immunocytochemistry of MTERFD1 in 3T3 cells with MTERFD1 antibody at 5 ug/mL.



Immunofluorescence of MTERFD1 in 3T3 cells with MTERFD1 antibody at 20 ug/mL.