

Product datasheet for **TA319905**

PRICKLE4 Rabbit Polyclonal Antibody

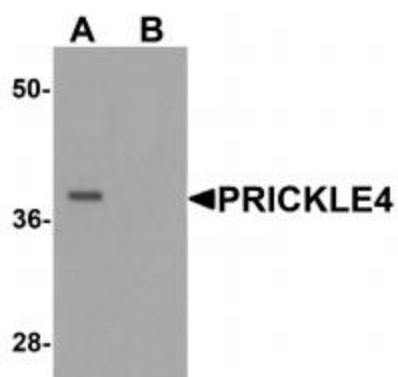
Product data:

Product Type:	Primary Antibodies
Applications:	IF, WB
Recommended Dilution:	WB: 0.25 ug/mL, ICC: 5 ug/mL, IF: 5 ug/mL
Reactivity:	Human
Host:	Rabbit
Isotype:	IgG
Clonality:	Polyclonal
Immunogen:	PRICKLE4 antibody was raised against an 18 amino acid synthetic peptide near the amino terminus of human PRICKLE4.
Formulation:	PRICKLE4 Antibody is supplied in PBS containing 0.02% sodium azide.
Concentration:	1ug/ul
Purification:	PRICKLE4 Antibody is affinity chromatography purified via peptide column.
Conjugation:	Unconjugated
Storage:	Store at -20°C as received.
Stability:	Stable for 12 months from date of receipt.
Gene Name:	prickle planar cell polarity protein 4
Database Link:	NP_037529 Entrez Gene 29964 Human Q2TBC4
Background:	PRICKLE4 Antibody: PRICKLE4, also known as over-expressed breast tumor protein (OBTP), is a member of the LIM family of proteins. It possesses two LIM domains as well as a PET domain and is thought to localize to the nucleus. Its expression in multiple malignant tissue differentiations indicate that it may play a role in cancer differentiation. Two other members of the LIM family, PRICKLE1 and PRICKLE2, are thought to function in the noncanonical WNT signaling pathway which regulates intracellular calcium release and planar cell polarity, suggesting the PRICKLE4 may play a similar role.
Synonyms:	C6orf49; OBTP; OEBT; TOMM6

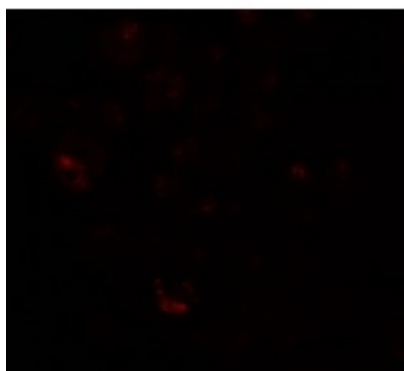


[View online »](#)

Product images:



Western blot analysis of PRICKLE4 in A549 cell lysate with PRICKLE4 antibody at 0.25 ug/ml in the (A) absence and (B) presence of blocking peptide.



Immunofluorescence of PRICKLE4 in A549 cells with PRICKLE4 antibody at 20 ug/mL.



Immunocytochemistry of PRICKLE4 in A549 cells with PRICKLE4 antibody at 5 ug/mL.