

## Product datasheet for **TA319902**

### CRTR1 (TFCP2L1) Rabbit Polyclonal Antibody

#### Product data:

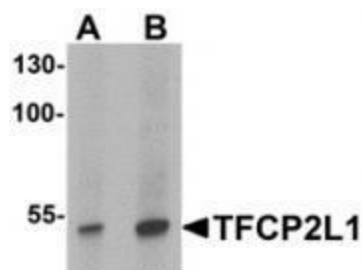
Product Type:	Primary Antibodies
Applications:	IF, IHC, WB
Recommended Dilution:	WB: 1 - 2 ug/mL, ICC: 2.5 ug/mL
Reactivity:	Human, Mouse, Rat
Host:	Rabbit
Isotype:	IgG
Clonality:	Polyclonal
Immunogen:	TFCP2L1 antibody was raised against a 15 amino acid synthetic peptide near the amino terminus of human TFCP2L1.
Formulation:	TFCP2L1 Antibody is supplied in PBS containing 0.02% sodium azide.
Concentration:	1ug/ul
Purification:	TFCP2L1 Antibody is affinity chromatography purified via peptide column.
Conjugation:	Unconjugated
Storage:	Store at -20°C as received.
Stability:	Stable for 12 months from date of receipt.
Gene Name:	transcription factor CP2-like 1
Database Link:	<a href="#">NP_055368</a> <a href="#">Entrez Gene 81879 Mouse</a> <a href="#">Entrez Gene 304741 Rat</a> <a href="#">Entrez Gene 29842 Human</a> <a href="#">Q9NZI6</a>
Background:	TFCP2L1 Antibody: The Transcription factor CP2-like protein 1 (TFCP2L1) is related to the ubiquitously expressed CP2 family of transcription factors that are generally transcription factors. TFCP2L1 is expressed in a developmentally regulated fashion during embryogenesis and in the epithelial lining of distal convoluted tubules in embryonic and adult kidneys. Recent studies have shown that TFCP2L1 is part of an Oct4-centered protein interaction network in embryonic stem cells. It is thought to modulate the activity of other CP2 family members in a cell specific manner, and is itself regulated by sumoylation at a single major site.
Synonyms:	CRTR1; LBP-9; LBP9



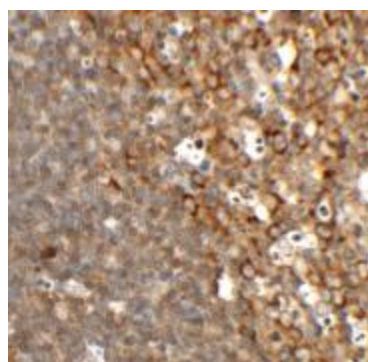
[View online »](#)

Protein Families: Transcription Factors

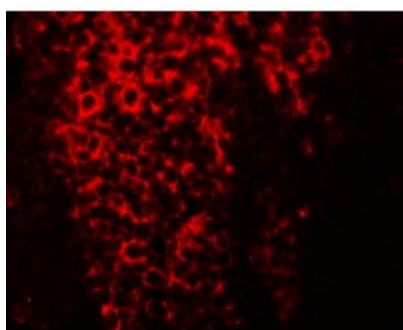
### Product images:



Western blot analysis of TFCP2L1 in human colon tissue lysate with TFCP2L1 antibody at (A) 1 and (B) 2 ug/mL



Immunohistochemistry of TFCP2L1 in rat colon tissue with TFCP2L1 antibody at 2.5 ug/mL.



Immunofluorescence of TFCP2L1 in rat colon tissue with TFCP2L1 antibody at 20 ug/mL.