

## Product datasheet for TA319901

### YPEL1 Rabbit Polyclonal Antibody

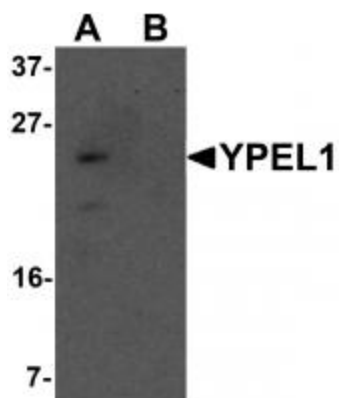
#### Product data:

Product Type:	Primary Antibodies
Applications:	IF, WB
Recommended Dilution:	WB: 1 ug/mL
Reactivity:	Human, Mouse, Rat
Host:	Rabbit
Isotype:	IgG
Clonality:	Polyclonal
Immunogen:	YPEL1 antibody was raised against a 11 amino acid synthetic peptide near the amino terminus of human YPEL1.
Formulation:	YPEL1 Antibody is supplied in PBS containing 0.02% sodium azide.
Concentration:	1ug/ul
Purification:	YPEL1 Antibody is affinity chromatography purified via peptide column.
Conjugation:	Unconjugated
Storage:	Store at -20°C as received.
Stability:	Stable for 12 months from date of receipt.
Gene Name:	yippee like 1
Database Link:	<a href="#">NP_037445</a> <a href="#">Entrez Gene 106369 Mouse</a> <a href="#">Entrez Gene 100360867 Rat</a> <a href="#">Entrez Gene 29799 Human</a> <a href="#">O60688</a>
Background:	YPEL1 Antibody: YPEL1 (yippee-like 1) is thought to play a role in the epitheloid conversion of fibroblasts and the regulation of the cellular morphology. It is a 119 amino acid protein that localizes to the nucleus and belongs to a family of yippee-like proteins that include YPEL2 - 5, all of which localize to the centrosome and nucleus and are widely expressed in both adult and fetal tissue. The family of human YPEL proteins share a high degree of sequence homology with their rodent homologs, suggesting a conserved function between species. YPEL1 might be an important factor during the development and malignant transformation of tissues.
Synonyms:	FKSG3

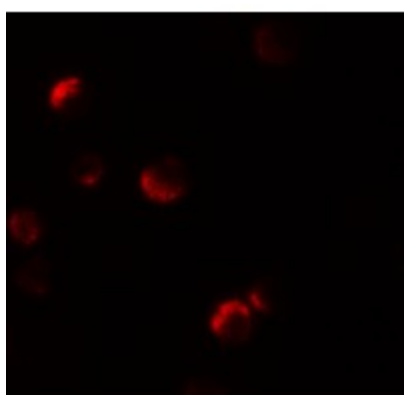


[View online »](#)

## Product images:



Western blot analysis of YPEL1 in HeLa cell lysate with YPEL1 antibody at 1 ug/mL in (A) the absence and (B) the presence of blocking peptide.



Immunofluorescence of YPEL1 in HeLa cells with YPEL1 antibody at 20 ug/mL.



Immunocytochemistry of YPEL1 in HeLa cells with YPEL1 antibody at 2.5 ug/mL.