

Product datasheet for **TA319900**

CARD10 Rabbit Polyclonal Antibody

Product data:

Product Type:	Primary Antibodies
Applications:	IHC
Recommended Dilution:	IHC: 5 ug/mL
Reactivity:	Human
Host:	Rabbit
Isotype:	IgG
Clonality:	Polyclonal
Immunogen:	CARMA3 antibody was raised against a 16 amino acid synthetic peptide near the amino terminus of human CARMA3.
Formulation:	CARMA3 Antibody is supplied in PBS containing 0.02% sodium azide.
Concentration:	1ug/ul
Purification:	CARMA3 Antibody is affinity chromatography purified via peptide column.
Conjugation:	Unconjugated
Storage:	Store at -20°C as received.
Stability:	Stable for 12 months from date of receipt.
Gene Name:	caspase recruitment domain family member 10
Database Link:	NP_055365 Entrez Gene 29775 Human Q9BWT7



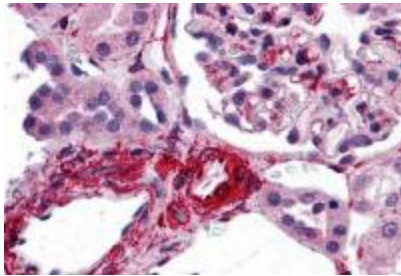
[View online »](#)

Background:

CARMA3 Antibody: CARMA proteins belong to the membrane-associated guanylate kinase-like (MAGUK) family of proteins that can function as molecular scaffolds that assist assembly of signal transduction molecules. CARMA1, CARMA2, and CARMA3 share high degrees of sequence and functional homology, but their tissue-specific distribution suggests that they serve distinct biological functions in different cell types. As with CARMA1, the CARD domain of CARMA3 has been shown to specifically interact with BCL10, a protein known to function as a positive regulator of cell apoptosis and NF- κ B activation. When expressed in cells, this protein binds to BCL10 and activates NF- κ B. Recent experiments have shown that CARMA3 is required for EGF-induced NF- κ B activation and contributes to tumor growth in vivo, suggesting that CARMA3 may serve as a new therapeutic target for the treatment of EGFR-driven tumors.

Synonyms:

BIMP1; CARMA3

Product images:

Immunohistochemistry of CARMA3 in human kidney tissue with CARMA3 antibody at 5 ug/ml