

## Product datasheet for **TA319899**

### SLC27A6 Rabbit Polyclonal Antibody

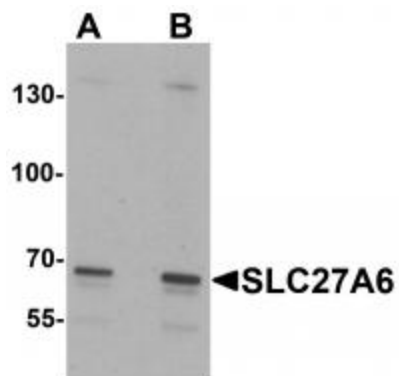
#### Product data:

Product Type:	Primary Antibodies
Applications:	IF, WB
Recommended Dilution:	WB: 1 - 2 ug/mL, IF: 20 ug/mL
Reactivity:	Human, Mouse, Rat
Host:	Rabbit
Isotype:	IgG
Clonality:	Polyclonal
Immunogen:	SLC27A6 antibody was raised against a 16 amino acid peptide near the amino terminus of human SLC27A6.
Formulation:	SLC27A6 Antibody is supplied in PBS containing 0.02% sodium azide.
Concentration:	1 mg/ml
Purification:	SLC27A6 Antibody is affinity chromatography purified via peptide column.
Conjugation:	Unconjugated
Storage:	Store at -20°C as received.
Stability:	Stable for 12 months from date of receipt.
Predicted Protein Size:	Predicted: 68 kDa; Observed: 68 kDa
Gene Name:	solute carrier family 27 member 6
Database Link:	<a href="#">NP_054750</a> <a href="#">Entrez Gene 28965 Human</a> <a href="#">Q9Y2P4</a>
Background:	SLC27A6 Antibody: The solute carrier family 27 (fatty acid transporter), member 6 (SLC27A6) is a member of the fatty acid transport protein family (FATP), which are involved in the uptake of long-chain fatty acids. SLC27A6 is principally expressed in the heart on the sarcolemma and colocalizes with CD36, another molecule involved in the uptake of long chain fatty acids.
Synonyms:	ACSVL2; FACVL2; FATP6; VLCS-H1

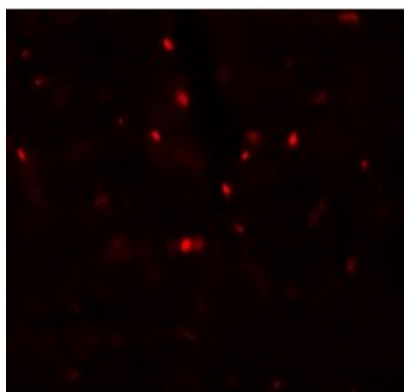


[View online »](#)

## Product images:



Western blot analysis of SLC27A6 in A20 cell lysate with SLC27A6 antibody at (A) 1 and (B) 2 ug/mL.



Immunofluorescence of SLC27A6 in rat heart tissue with SLC27A6 antibody at 20 ug/mL.