

Product datasheet for **TA319898**

CCDC22 Rabbit Polyclonal Antibody

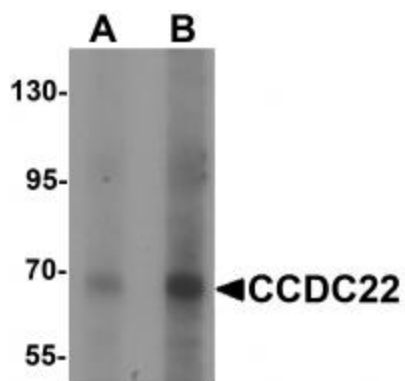
Product data:

Product Type:	Primary Antibodies
Applications:	IF, WB
Recommended Dilution:	WB: 1 - 2 ug/mL, IF: 20 ug/mL
Reactivity:	Human, Mouse, Rat
Host:	Rabbit
Isotype:	IgG
Clonality:	Polyclonal
Immunogen:	CCDC22 antibody was raised against an 18 amino acid synthetic peptide near the amino terminus of human CCDC22.
Formulation:	CCDC22 Antibody is supplied in PBS containing 0.02% sodium azide.
Concentration:	1ug/ul
Purification:	CCDC22 Antibody is affinity chromatography purified via peptide column.
Conjugation:	Unconjugated
Storage:	Store at -20°C as received.
Stability:	Stable for 12 months from date of receipt.
Gene Name:	coiled-coil domain containing 22
Database Link:	NP_054727 Entrez Gene 54638 Mouse Entrez Gene 317381 Rat Entrez Gene 28952 Human O60826
Background:	CCDC22 Antibody: CCDC22 is a recently identified coiled-coil domain-containing protein that has been shown to bind copines, which are calcium-dependent, membrane-binding proteins that may function in calcium signaling. In rat, CCDC22 has been observed to localize in multiple regions of the brain, including the prefrontal and somatosensory cortex, dentate gyrus and thalamus, and in the ipsilateral motor neurons of the spinal cord after sciatic nerve transection suggesting that it may play a role in neuronal injury response. The human CCDC22 gene has been identified as a novel candidate gene for syndromic X-linked intellectual disability (XLID).
Synonyms:	CXorf37; JM1; RTSC2

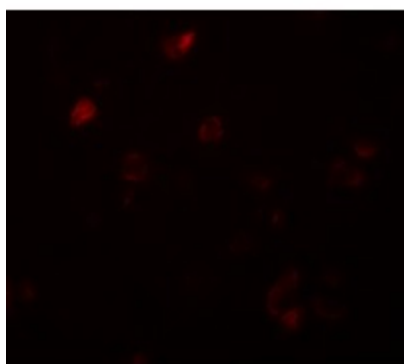


[View online »](#)

Product images:



Western blot analysis of CCDC22 in 293 cell lysate with CCDC22 antibody at (A) 1 and (B) 2 ug/mL.



Immunofluorescence of CCDC22 in human brain tissue with CCDC22 antibody at 20 ug/mL.