

## Product datasheet for **TA319897**

### SGSM3 Rabbit Polyclonal Antibody

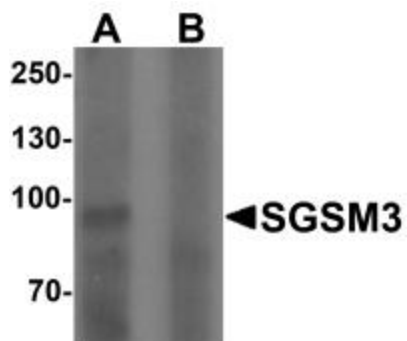
#### Product data:

Product Type:	Primary Antibodies
Applications:	IF, WB
Recommended Dilution:	WB: 1 ug/mL, IF: 20 ug/mL
Reactivity:	Human
Host:	Rabbit
Isotype:	IgG
Clonality:	Polyclonal
Immunogen:	SGSM3 antibody was raised against an 18 amino acid synthetic peptide near the amino terminus of human SGSM3.
Formulation:	SGSM3 Antibody is supplied in PBS containing 0.02% sodium azide.
Concentration:	1ug/ul
Purification:	SGSM3 Antibody is affinity chromatography purified via peptide column.
Conjugation:	Unconjugated
Storage:	Store at -20°C as received.
Stability:	Stable for 12 months from date of receipt.
Predicted Protein Size:	82 kDa
Gene Name:	small G protein signaling modulator 3
Database Link:	<a href="#">NP_056520</a> <a href="#">Entrez Gene 27352 Human</a> <a href="#">Q96HU1</a>
Background:	SGSM3 Antibody: Small G proteins such as RAP and RAB proteins are the key molecules in intracellular signal transduction and vesicle transportation. A novel protein family small G protein signaling modulator (SGSM) consisting of three members SGSM1-3 bind to RAP and RAB family proteins. All three SGSM proteins possess both a RUN domain and a TBC domain. Little is known of the exact function of SGSM3.
Synonyms:	MAP; RabGAP-5; RABGAP5; rabGAPLP; RUSC3; RUTBC3

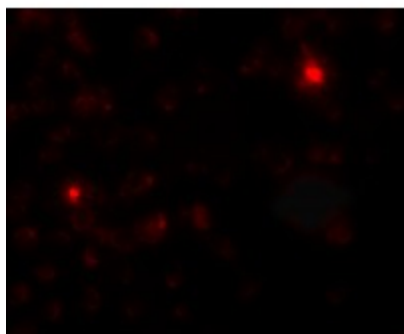


[View online »](#)

## Product images:



Western blot analysis of SGSM3 in 293 cell lysate with SGSM3 antibody at 1 ug/mL in (A) the absence and (B) the presence of blocking peptide.



Immunofluorescence of SGSM3 in 293 cells with SGSM3 antibody at 20 ug/mL.