

## Product datasheet for **TA319896**

### Rabex5 (RABGEF1) Rabbit Polyclonal Antibody

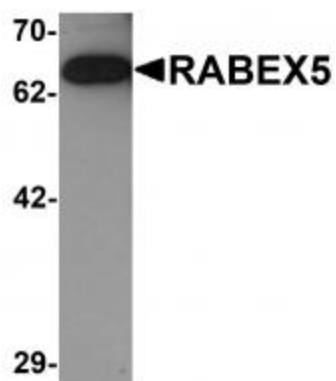
#### Product data:

Product Type:	Primary Antibodies
Applications:	IF, IHC, WB
Recommended Dilution:	WB: 1 ug/mL, ICC: 5 ug/mL, IF: 20 ug/mL
Reactivity:	Human, Mouse, Rat
Host:	Rabbit
Isotype:	IgG
Clonality:	Polyclonal
Immunogen:	RABEX5 antibody was raised against a 19 amino acid synthetic peptide near the center terminus of human RABEX5.
Formulation:	RABEX5 Antibody is supplied in PBS containing 0.02% sodium azide.
Concentration:	1ug/ul
Purification:	RABEX5 Antibody is affinity chromatography purified via peptide column.
Conjugation:	Unconjugated
Storage:	Store at -20°C as received.
Stability:	Stable for 12 months from date of receipt.
Gene Name:	RAB guanine nucleotide exchange factor 1
Database Link:	<a href="#">NP_055319</a> <a href="#">Entrez Gene 56715 Mouse</a> <a href="#">Entrez Gene 360797 Rat</a> <a href="#">Entrez Gene 27342 Human</a> <a href="#">Q9UJ41</a>
Background:	RABEX5 Antibody: RABEX5 is a guanine nucleotide exchange factor (GEF) that forms a complex with rabaptin-5 and specifically activates Rab5, a small GTPase that plays an essential role in endocytic traffic. RABEX-5 is thought to also interact with another member of the Rab family, Rab22, which targets RABEX5 to early endosomes, allowing it to activate Rab5 and thereby promote Rab5-mediated endosome fusion.
Synonyms:	rabex-5; RABEX5; RAP1

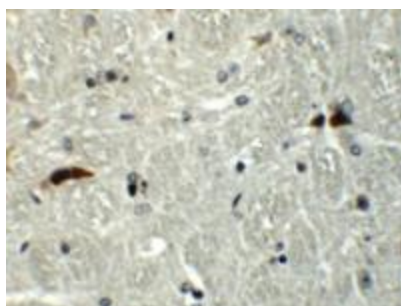


[View online »](#)

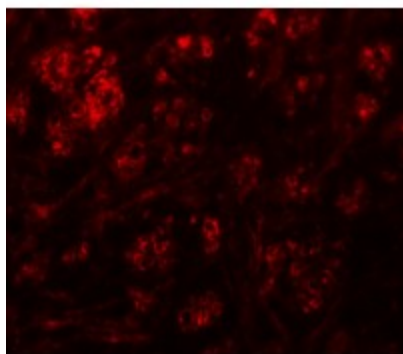
## Product images:



Western blot analysis of RABEX5 in rat brain tissue lysate with RABEX5 antibody at 1 ug/mL.



Immunohistochemistry of RABEX5 in mouse brain tissue with RABEX5 antibody at 5 ug/mL.



Immunofluorescence of RABEX5 in mouse brain tissue with RABEX5 antibody at 20 ug/mL.