

Product datasheet for **TA319894**

SLC39A1 Rabbit Polyclonal Antibody

Product data:

Product Type:	Primary Antibodies
Applications:	IF, IHC, WB
Recommended Dilution:	WB: 1 - 2 ug/mL, ICC: 2.5 ug/mL, IF: 20 ug/mL
Reactivity:	Human, Mouse
Host:	Rabbit
Isotype:	IgG
Clonality:	Polyclonal
Immunogen:	ZIP1 antibody was raised against a 16 amino acid synthetic peptide near the amino terminus of human ZIP1.
Formulation:	ZIP1 Antibody is supplied in PBS containing 0.02% sodium azide.
Concentration:	1ug/ul
Purification:	ZIP1 Antibody is affinity chromatography purified via peptide column.
Conjugation:	Unconjugated
Storage:	Store at -20°C as received.
Stability:	Stable for 12 months from date of receipt.
Gene Name:	solute carrier family 39 member 1
Database Link:	NP_055252 Entrez Gene 30791 Mouse Entrez Gene 27173 Human Q9NY26
Background:	ZIP1 Antibody: ZIP1, also known as ZIRTL (zinc-iron regulated transporter-like), is the first mammalian member of a family of divalent ion transporters. Zinc is an essential ion for cells and plays significant roles in the growth, development, and differentiation. ZIP1 expression is markedly downregulated in a number of cancerous tissues and is thought to function as a tumor suppressor gene in prostate cancer. More recent studies have shown that overexpression of ZIP1 and concomitant increased levels of intracellular zinc in PC-3 cells cause a significant inhibition of NF-κB, leading to down-regulation of the antiapoptotic protein Bcl-2, Bcl-XL, and the apoptosis inhibitor XIAP, reducing the malignant potential of prostate cancer cells in vitro and in vivo.

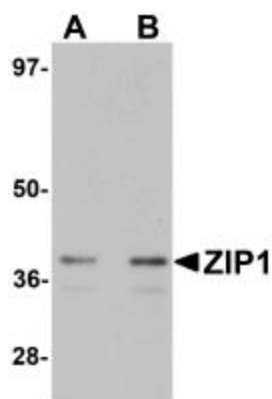


[View online »](#)

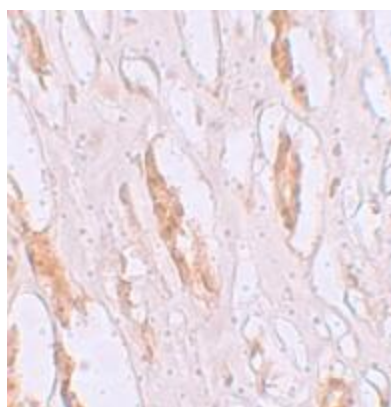
Synonyms: ZIP1; ZIRTL

Protein Families: Transmembrane

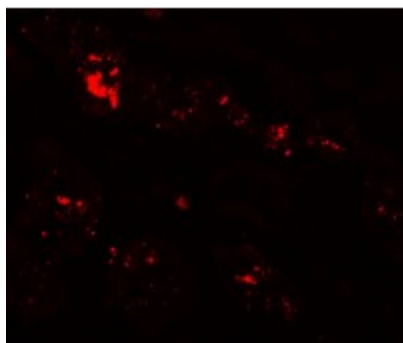
Product images:



Western blot analysis of ZIP1 in mouse kidney tissue lysate with ZIP1 antibody at (A) 1 and (B) 2 ug/mL.



Immunohistochemistry of ZIP1 in human kidney tissue with ZIP1 antibody at 2.5 ug/mL.



Immunofluorescence of ZIP1 in human kidney tissue with ZIP1 antibody at 20 ug/mL.