

Product datasheet for **TA319885**

NKX2.8 (NKX2-8) Rabbit Polyclonal Antibody

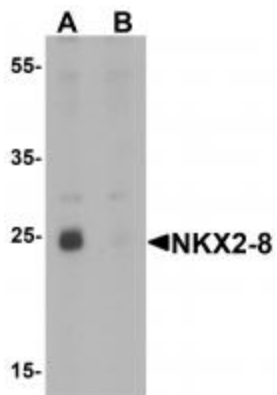
Product data:

Product Type:	Primary Antibodies
Applications:	IF, IHC, WB
Recommended Dilution:	WB: 1 ug/mL, ICC: 2.5 ug/mL
Reactivity:	Human, Mouse, Rat
Host:	Rabbit
Isotype:	IgG
Clonality:	Polyclonal
Immunogen:	NKX2-8 antibody was raised against a 19 amino acid synthetic peptide near the center of human NKX2-8.
Formulation:	NKX2-8 Antibody is supplied in PBS containing 0.02% sodium azide.
Concentration:	1ug/ul
Purification:	NKX2-8 Antibody is affinity chromatography purified via peptide column.
Conjugation:	Unconjugated
Storage:	Store at -20°C as received.
Stability:	Stable for 12 months from date of receipt.
Gene Name:	NK2 homeobox 8
Database Link:	NP_055175 Entrez Gene 299061 Rat Entrez Gene 26257 Human O15522
Background:	NKX2-8 Antibody: NKX2-8 (NK2 homeobox 8) is a member of a family of transcription factors that are involved in embryonic development and cell fate. It is expressed in the ventral foregut, the developing heart, the epithelial layers of the branchial arches and in the dorsal mesoderm. In conjunction with related protein, NKX2-5, NKX2-8 may play a role in cardiac embryonic development. NKX2-8 is also thought to be involved in lung development and is suspected of being an oncogene in lung cancer that is activated by way of gene amplification at chromosome 14q13.
Synonyms:	Nkx2-9; NKX2.8; NKX2H
Protein Families:	Druggable Genome, Transcription Factors

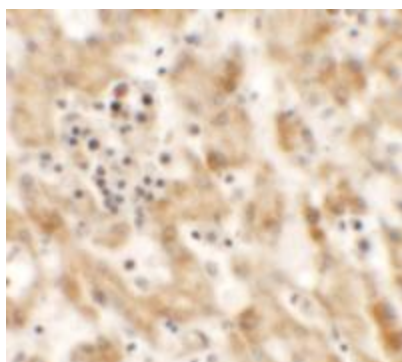


[View online »](#)

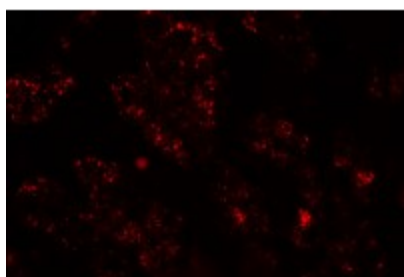
Product images:



Western blot analysis of NKX2-8 in rat liver tissue lysate with NKX2-8 antibody at 1 ug/mL in (A) the absence and (B) the presence of blocking peptide



Immunohistochemistry of NKX2-8 in human liver tissue with NKX2-8 antibody at 2.5 ug/mL.



Immunofluorescence of NKX-8 in human liver tissue with NKX2-8 antibody at 20 ug/mL.