

Product datasheet for **TA319884**

RGS22 Rabbit Polyclonal Antibody

Product data:

Product Type:	Primary Antibodies
Applications:	IF, WB
Recommended Dilution:	WB: 1 - 2 ug/mL, IF: 20 ug/mL
Reactivity:	Human, Mouse, Rat
Host:	Rabbit
Isotype:	IgG
Clonality:	Polyclonal
Immunogen:	RGS22 antibody was raised against a 19 amino acid synthetic peptide near the amino terminus of human RGS22.
Formulation:	RGS22 Antibody is supplied in PBS containing 0.02% sodium azide.
Concentration:	1ug/ul
Purification:	RGS22 Antibody is affinity chromatography purified via peptide column.
Conjugation:	Unconjugated
Storage:	Store at -20°C as received.
Stability:	Stable for 12 months from date of receipt.
Predicted Protein Size:	139 kDa
Gene Name:	regulator of G-protein signaling 22
Database Link:	NP_056483 Entrez Gene 626596 MouseEntrez Gene 500853 RatEntrez Gene 26166 Human Q8NE09



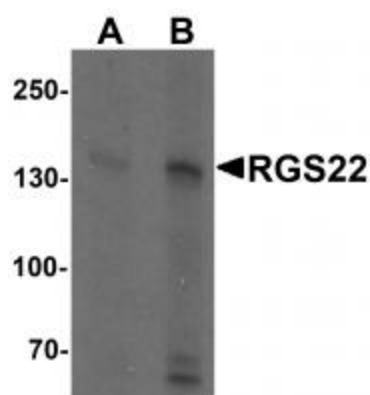
[View online »](#)

Background:

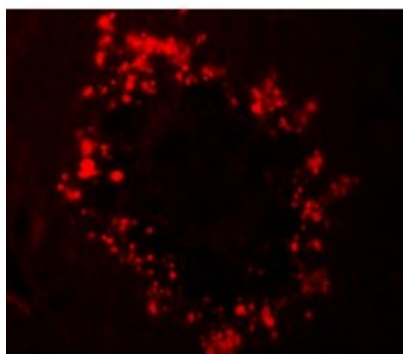
RGS22 Antibody: Regulator of G-protein signaling (RGS) proteins contain an 120 amino acid conserved domain, termed the RGS domain, that acts as a GTPase-activating protein that acts to reduce the signal transmitted by the receptor-activated G-alpha subunit. RGS22 is a recently identified member of this family that localizes to the testis and can interact with guanine nucleotide binding proteins alpha 11, 12, and 13 (GNA11, GNA12, and GNA13). While RGS22 has been postulated to play a role in spermiogenesis in the testis, it is also expressed in several cancer cell lines with an epithelial origin and associated with cancer metastasis. Its overexpression in a highly metastatic cancer causes a decrease in cell migration and a reduction of the invasive potential of the cells, suggesting that RGS22 may be a potential prognostic biomarker for metastasis.

Synonyms:

CT145; PRTD-NY2

Product images:


Western blot analysis of RGS22 in Jurkat cell lysate with RGS22 antibody at (A) 1 and (B) 2 ug/mL.



Immunofluorescence of RGS22 in human testis tissue with RGS22 antibody at 20 ug/mL.