

Product datasheet for **TA319883**

TCTN3 Rabbit Polyclonal Antibody

Product data:

Product Type:	Primary Antibodies
Applications:	IF, WB
Recommended Dilution:	WB: 1 - 2 ug/mL, ICC: 4 ug/mL, IF: 20 ug/mL
Reactivity:	Human, Mouse, Rat
Host:	Rabbit
Isotype:	IgG
Clonality:	Polyclonal
Immunogen:	TCTN3 antibody was raised against a 17 amino acid synthetic peptide near the carboxy terminus of human TCTN3.
Formulation:	TCTN3 Antibody is supplied in PBS containing 0.02% sodium azide.
Concentration:	1ug/ul
Purification:	TCTN3 Antibody is affinity chromatography purified via peptide column.
Conjugation:	Unconjugated
Storage:	Store at -20°C as received.
Stability:	Stable for 12 months from date of receipt.
Gene Name:	tectonic family member 3
Database Link:	NP_056446 Entrez Gene 67590 Mouse Entrez Gene 309486 Rat Entrez Gene 26123 Human Q6NUS6
Background:	TCTN3 Antibody: TCTN3 is a member of the Tectonic protein family, a group of evolutionarily conserved secreted and transmembrane proteins that regulate the Hedgehog (Hh)-mediated patterning of the neural tube. While the expression pattern and function of TCTN3 is not known, it is 58% similar to TCTN1. TCTN1 is expressed during embryonic development in regions that participate in Hh signaling, beginning in the gastrulation stages in the ventral node. Mice expressing mutant TCTN1 die between E13.5 and E16.5 and display holoprosencephaly, a defect associated with reduced Hh signaling, indicating the role of TCTN1 as an Hh activator. At later stages in development, TCTN1 is thought to also act as a repressor on the Hh pathway in the anterior and posterior neural tube.

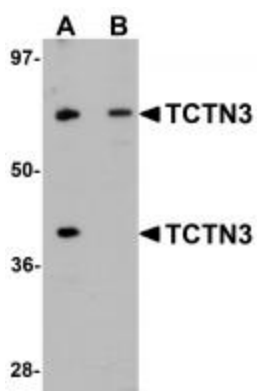


[View online »](#)

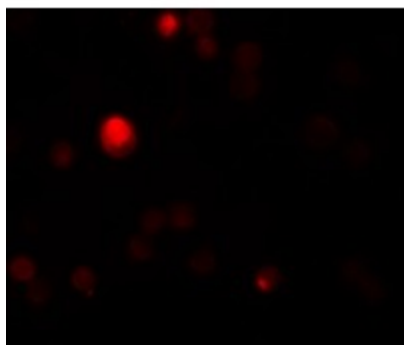
Synonyms: C10orf61; JBTS18; OFD4; TECT3

Protein Families: Transmembrane

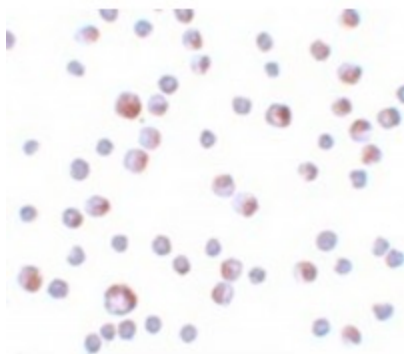
Product images:



Western blot analysis of TCTN3 in HeLa cell lysate with TCTN3 antibody at (A) 1 and (B) 2ug/mL.



Immunofluorescence of TCTN3 in HeLa cells with TCTN3 antibody at 20 ug/mL.



Immunocytochemistry of TCTN3 in HeLa cells with TCTN3 antibody at 4 ug/mL.