

## Product datasheet for **TA319882**

### WIPI2 Rabbit Polyclonal Antibody

#### Product data:

Product Type:	Primary Antibodies
Applications:	WB
Recommended Dilution:	WB: 1 - 2 ug/mL
Reactivity:	Human, Rat
Host:	Rabbit
Isotype:	IgG
Clonality:	Polyclonal
Immunogen:	Rabbit polyclonal WIPI2 antibody was raised against a 17 amino acid peptide near the amino terminus of human WIPI2.
Formulation:	WIPI2 Antibody is supplied in PBS containing 0.02% sodium azide.
Concentration:	1ug/ul
Purification:	WIPI2 Antibody is affinity chromatography purified via peptide column.
Conjugation:	Unconjugated
Storage:	Store at -20°C as received.
Stability:	Stable for 12 months from date of receipt.
Predicted Protein Size:	50 kDa
Gene Name:	WD repeat domain, phosphoinositide interacting 2
Database Link:	<a href="#">NP_056425</a> <a href="#">Entrez Gene 26100 Human</a> <a href="#">Q9Y4P8</a>

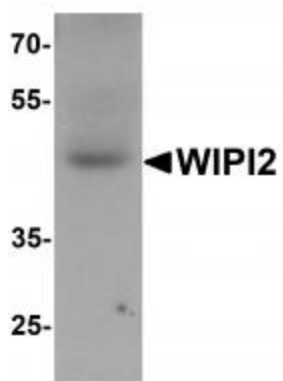
**Background:** WIPI2 Antibody: WD repeat proteins play a role in many essential biologic functions, regulating the assembly of multiprotein complexes by presenting a beta-propeller platform for simultaneous and reversible protein-protein interactions. WIPI2, also known as ATG18B or ATG21, is a human homolog to yeast ATG18 and contains three WD repeats and has a 7-bladed propeller structure with a conserved motif that facilitates its interaction with other proteins. It is recruited to early autophagosomal structures along with Atg16L and ULK1 and is required for the formation of LC3-positive autophagosomes. Along with the highly related WIPI1, WIPI2 is found at the plasma membrane in addition to autophagosomal membranes.



[View online »](#)

Synonyms: ATG18B; Atg21; CGI-50; WIPI-2

**Product images:**



Western blot analysis of WIPI2 in human testis tissue lysate with WIPI2 antibody at 1 ug/mL