

## Product datasheet for **TA319881**

### LRRTM2 Rabbit Polyclonal Antibody

#### Product data:

Product Type:	Primary Antibodies
Applications:	IF, IHC, WB
Recommended Dilution:	WB: 1 ug/mL, ICC: 2.5 ug/mL, IF: 20 ug/mL
Reactivity:	Human, Mouse, Rat
Host:	Rabbit
Isotype:	IgG
Clonality:	Polyclonal
Immunogen:	LRRTM2 antibody was raised against a 17 amino acid synthetic peptide near the carboxy terminus of human LRRTM2.
Formulation:	LRRTM2 Antibody is supplied in PBS containing 0.02% sodium azide.
Concentration:	1ug/ul
Purification:	LRRTM2 Antibody is affinity chromatography purified via peptide column.
Conjugation:	Unconjugated
Storage:	Store at -20°C as received.
Stability:	Stable for 12 months from date of receipt.
Gene Name:	leucine rich repeat transmembrane neuronal 2
Database Link:	<a href="#">NP_056379</a> <a href="#">Entrez Gene 107065 Mouse</a> <a href="#">Entrez Gene 685472 Rat</a> <a href="#">Entrez Gene 26045 Human</a> <a href="#">O43300</a>
Background:	LRRTM2 Antibody: The Leucine-rich repeat transmembrane neuronal proteins (LRRTMs) are differentially expressed in the nervous system and were recently found to instruct presynaptic and mediate postsynaptic glutamatergic differentiation, with LRRTM1 and LRRTM2 most potent at inducing presynaptic differentiation. Each LRRTM protein is a type I transmembrane containing ten extracellular leucine-rich repeats and a short intracellular tail and has a developmentally regulated pattern distinct from all others. LRRTM2 interacts with PSD-95 and regulates the surface expression of AMPA receptors. LRRTM2 also functions as a neurexin ligand, binding both Neurexin 1-alpha and -beta, suggesting that LRRTM2-Neurexin1 interaction plays a critical role in regulatory excitatory synapse development.

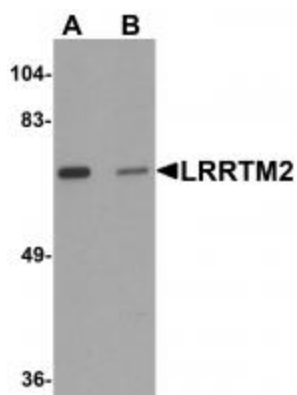


[View online »](#)

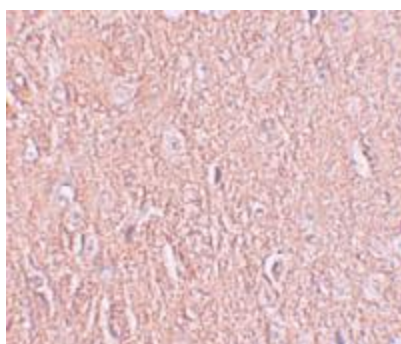
Synonyms: FLJ76283; FLJ99831

Protein Families: Transmembrane

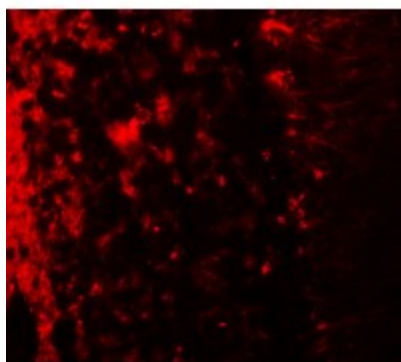
### Product images:



Western blot analysis of LRRTM2 in SK-N-SH cell lysate with LRRTM2 antibody at 1 ug/mL in (A) the absence and (B) the presence of blocking peptide.



Immunohistochemistry of LRRTM2 in human brain tissue with LRRTM2 antibody at 2.5 ug/mL.



Immunofluorescence of LRRTM2 in human brain tissue with LRRTM2 antibody at 20 ug/mL.