

## Product datasheet for **TA319880**

### NELF (NSMF) Rabbit Polyclonal Antibody

#### Product data:

Product Type:	Primary Antibodies
Applications:	IF, IHC, WB
Recommended Dilution:	WB: 1 - 2 ug/mL
Reactivity:	Human, Mouse, Rat
Host:	Rabbit
Isotype:	IgG
Clonality:	Polyclonal
Immunogen:	Rabbit polyclonal NELF antibody was raised against a 17 amino acid peptide near the center of human NELF.
Formulation:	NELF Antibody is supplied in PBS containing 0.02% sodium azide.
Concentration:	1ug/ul
Purification:	NELF Antibody is affinity chromatography purified via peptide column.
Conjugation:	Unconjugated
Storage:	Store at -20°C as received.
Stability:	Stable for 12 months from date of receipt.
Predicted Protein Size:	58 kDa
Gene Name:	NMDA receptor synaptonuclear signaling and neuronal migration factor
Database Link:	<a href="#">NP_056352</a> <a href="#">Entrez Gene 26012 Human</a> <a href="#">Q6X4W1</a>

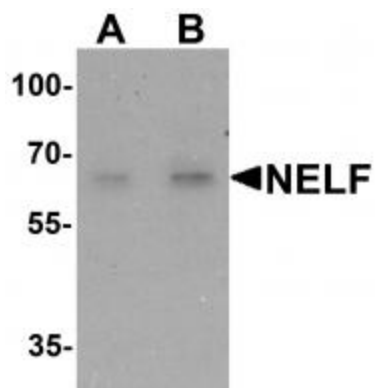
**Background:** NELF Antibody: NELF (nasal embryonic luteinizing hormone-releasing hormone factor) is a 530 amino acid transcription factor involved in the migration of LHRH neurons, outgrowth of olfactory axons and suppression of transcription elongation. NELF is found in the peripheral and central nervous system during embryonic development, and is highly expressed in adult testis, kidney and brain. Known to couple NMDA receptor signaling to the nucleus, NELF knockdown impaired GnRH neuronal migration of NLT cells in vitro and the gene encoding NELF has been linked to the development of Idiopathic hypogonadotropic hypogonadism (IHH), a disorder resulting in impaired pubertal maturation and reproductive function.



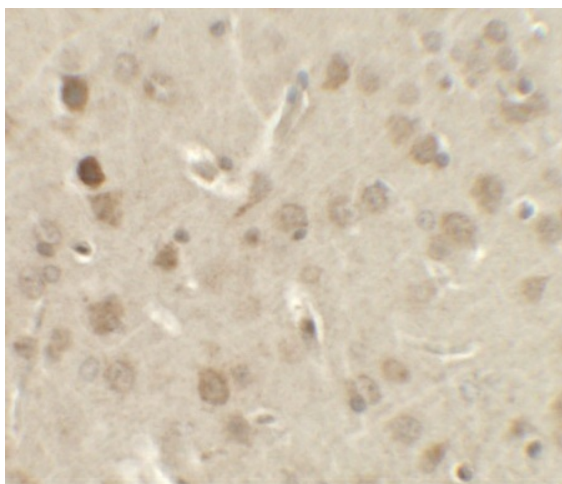
[View online »](#)

Synonyms: HH9; NELF

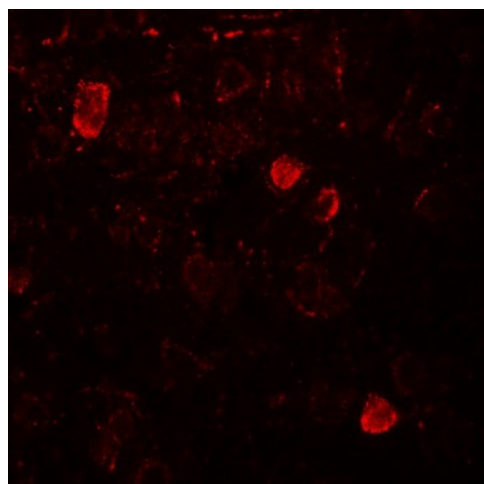
**Product images:**



Western blot analysis of NELF in HeLa cell lysate with NELF antibody at (A) 1 and (B) 2 ug/mL.



Immunohistochemistry of NELF in rat brain tissue with NELF antibody at 2.5 ug/mL.



Immunofluorescence of NELF in rat brain tissue with NELF antibody at 20 ug/mL.