

Product datasheet for **TA319879**

HIGD1A Rabbit Polyclonal Antibody

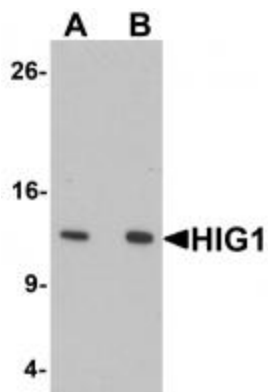
Product data:

Product Type:	Primary Antibodies
Applications:	IF, WB
Recommended Dilution:	WB: 0.5 - 1 ug/mL, IF: 10 ug/mL
Reactivity:	Human
Host:	Rabbit
Isotype:	IgG
Clonality:	Polyclonal
Immunogen:	HIG1 antibody was raised against a 19 amino acid synthetic peptide near the amino terminus of human HIG1.
Formulation:	HIG1 Antibody is supplied in PBS containing 0.02% sodium azide.
Concentration:	1ug/ul
Purification:	HIG1 Antibody is affinity chromatography purified via peptide column.
Conjugation:	Unconjugated
Storage:	Store at -20°C as received.
Stability:	Stable for 12 months from date of receipt.
Gene Name:	HIG1 hypoxia inducible domain family member 1A
Database Link:	NP_001093138 Entrez Gene 25994 Human Q9Y241
Background:	HIG1 Antibody: HIG1 and HIG2 (Hypoxia-inducible gene 1 and 2, respectively) are known to be induced by hypoxic conditions. HIG1 is induced by hypoxia and by glucose deprivation in cultured cells. In addition, tumor xenografts derived from human cervical cancer cells display increased expression of HIG1 and HIG2 when they are deprived of oxygen. Unlike HIG2, which is ubiquitously expressed and might be an activator and target of the canonical Wnt pathway, the function and the mechanisms underlying its regulation of HIG1 still remained unknown. The putative link between hypoxia and an oncogenic signaling pathway might play an important role in tumorigenesis.
Synonyms:	HIG1; RCF1a

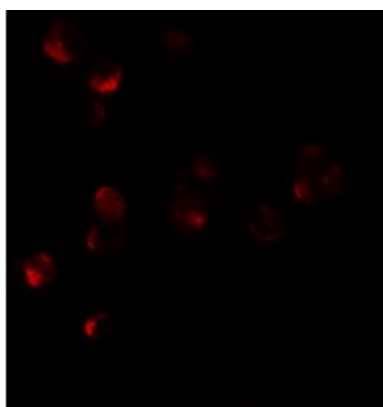


[View online »](#)

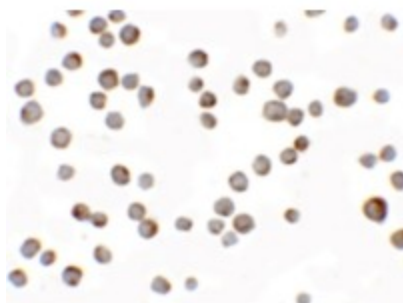
Product images:



Western blot analysis of HIG1 in 293 cell lysate with HIG1 antibody at at (A) 0.5 and (B) 1 ug/mL.



Immunofluorescence of HIG1 in 293 cells tissue with HIG1 antibody at 10 ug/mL.



Immunocytochemistry of HIG1 in 293 cells with HIG1 antibody at 2.5 ug/mL.