

## Product datasheet for **TA319878**

### ANKRD25 (KANK2) Rabbit Polyclonal Antibody

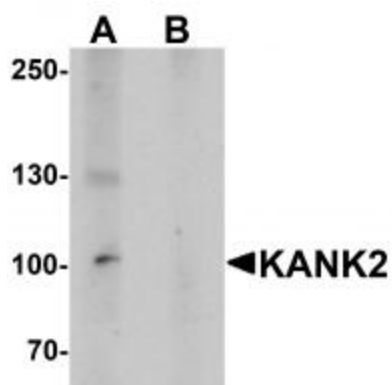
#### Product data:

Product Type:	Primary Antibodies
Applications:	IF, IHC, WB
Recommended Dilution:	WB: 1 ug/mL
Reactivity:	Human, Mouse, Rat
Host:	Rabbit
Isotype:	IgG
Clonality:	Polyclonal
Immunogen:	KANK2 antibody was raised against a 16 amino acid peptide near the carboxy terminus of human KANK2 .
Formulation:	KANK2 Antibody is supplied in PBS containing 0.02% sodium azide.
Concentration:	1ug/ul
Purification:	KANK2 Antibody is affinity chromatography purified via peptide column.
Conjugation:	Unconjugated
Storage:	Store at -20°C as received.
Stability:	Stable for 12 months from date of receipt.
Predicted Protein Size:	Predicted: 95 kDa; Observed: 102 kDa
Gene Name:	KN motif and ankyrin repeat domains 2
Database Link:	<a href="#">NP_056308</a> <a href="#">Entrez Gene 235041</a> <a href="#">MouseEntrez Gene 100361376</a> <a href="#">RatEntrez Gene 25959</a> <a href="#">Human Q63ZY3</a>
Background:	KANK2 Antibody: Ankyrins are membrane adaptor molecules that play important roles in the control of cytoskeleton formation by regulating actin polymerization. KANK2 (KN motif and ankyrin repeat domain-containing protein 2), was initially identified as a steroid receptor coactivator (SRC) interacting protein (SIP) that could sequester steroid receptor coactivators in the cytoplasm. More recent experiments have shown that while KANK2 is widely expressed, in kidney podocytes, KANK2 localizes to foot processes, suggesting that KANK2 may contribute to controlling actin dynamics in podocyte foot processes.
Synonyms:	ANKRD25; MXRA3; PPKWH; SIP

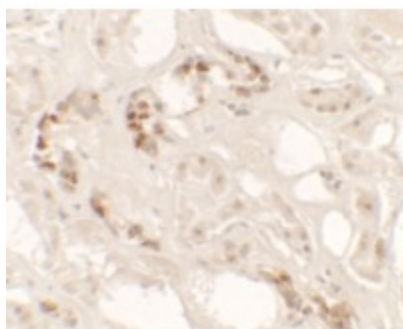


[View online »](#)

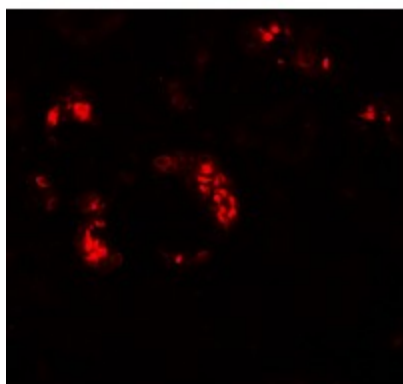
## Product images:



Western blot analysis of KANK2 in mouse brain tissue lysate with KANK2 antibody at 1 ug/mL in (A) the absence and (B) the presence of blocking peptide.



Immunohistochemistry of KANK2 in human kidney tissue with KANK2 antibody at 2.5 ug/mL.



Immunofluorescence of KANK2 in human kidney tissue with KANK2 antibody at 20 ug/mL.