

Product datasheet for **TA319877**

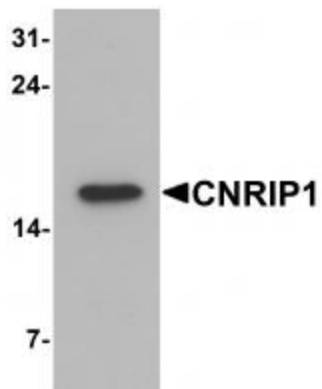
CNRIP1 Rabbit Polyclonal Antibody

Product data:

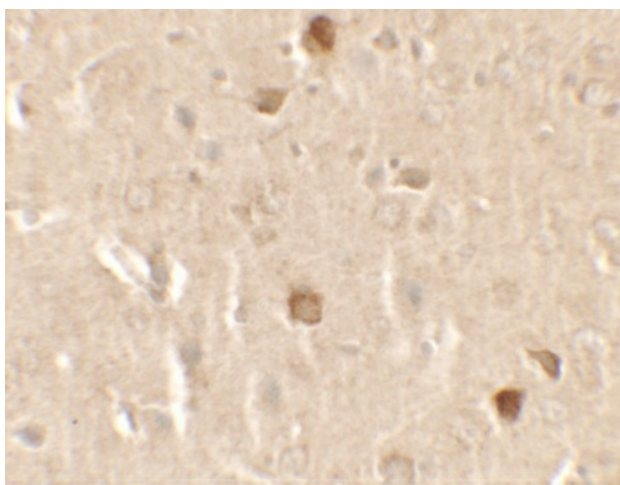
Product Type:	Primary Antibodies
Applications:	IF, IHC, WB
Recommended Dilution:	WB: 1 - 2 ug/mL
Reactivity:	Human, Mouse, Rat
Host:	Rabbit
Isotype:	IgG
Clonality:	Polyclonal
Immunogen:	CNRIP1 antibody was raised against a 15 amino acid peptide near the center of human CNRIP1.
Formulation:	CNRIP1 Antibody is supplied in PBS containing 0.02% sodium azide.
Concentration:	1ug/ul
Purification:	CNRIP1 Antibody is affinity chromatography purified via peptide column.
Conjugation:	Unconjugated
Storage:	Store at -20°C as received.
Stability:	Stable for 12 months from date of receipt.
Predicted Protein Size:	Predicted: 18 kDa; Observed: 16 kDa
Gene Name:	cannabinoid receptor interacting protein 1
Database Link:	NP_056278 Entrez Gene 25927 Human Q96F85
Background:	CNRIP1 Antibody: The CNRIP1 (cannabinoid receptor interacting protein 1) protein is a G-protein coupled receptor which interacts with the C-terminal tail of cannabinoid receptor 1 (CB1) and is thought to play a role in synaptic plasticity, analgesia, appetite, and neuroprotection. One isoform of CNRIP1, CNRIP1a, modulates the constitutive CB1 receptor activity in the central nervous system (CNS), while the role of the shorter isoform CNRIP1b is yet unknown. CNRIP1 has been suggested as a potential target for CNS drug discovery.
Synonyms:	C2orf32; CRIP1

[View online »](#)

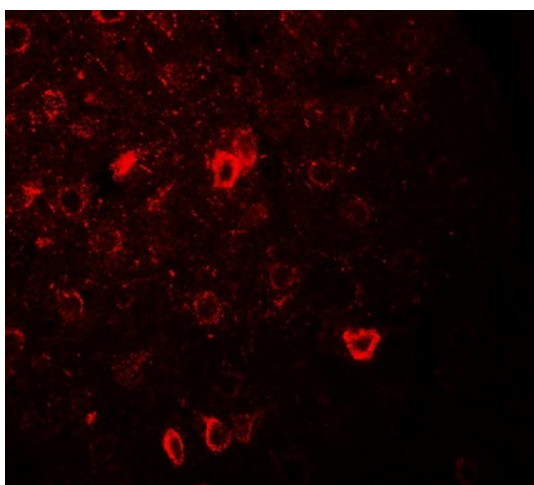
Product images:



Western blot analysis of CNRIP1 in human brain tissue lysate with CNRIP1 antibody at 1 ug/mL.



Immunohistochemistry of CNRIP1 in rat brain tissue with CNRIP1 antibody at 2.5 ug/mL.



Immunofluorescence of CNRIP1 in rat brain tissue with CNRIP1 antibody at 20 ug/mL.