

Product datasheet for **TA319873**

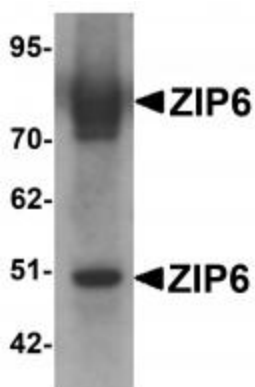
SLC39A6 Rabbit Polyclonal Antibody

Product data:

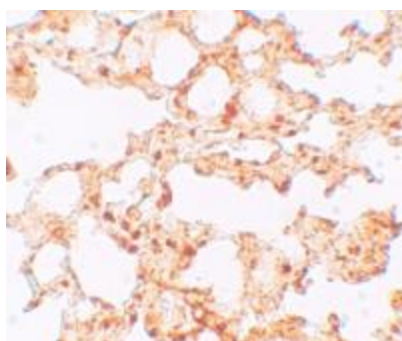
Product Type:	Primary Antibodies
Applications:	IF, IHC, WB
Recommended Dilution:	WB: 1 ug/mL, ICC: 2.5 ug/mL, IF: 20 ug/mL
Reactivity:	Human, Mouse
Host:	Rabbit
Isotype:	IgG
Clonality:	Polyclonal
Immunogen:	ZIP6 antibody was raised against a 16 amino acid synthetic peptide near the center of human ZIP6.
Formulation:	ZIP6 Antibody is supplied in PBS containing 0.02% sodium azide.
Concentration:	1ug/ul
Purification:	ZIP6 Antibody is affinity chromatography purified via peptide column.
Conjugation:	Unconjugated
Storage:	Store at -20°C as received.
Stability:	Stable for 12 months from date of receipt.
Gene Name:	solute carrier family 39 member 6
Database Link:	NP_001092876 Entrez Gene 25800 Human Q13433
Background:	ZIP6 Antibody: The zinc transporter ZIP6, also known as SLC39A6, is a member of a family of divalent ion transporters. Zinc is an essential ion for cells and plays significant roles in the growth, development, and differentiation. ZIP6 was initially identified as LIV-1, an estrogen-regulated gene that has been implicated in metastatic breast cancer. Elevated ZIP6 expression has also been reported in human cervical cancer and the HeLa cell line; down-regulation of ZIP6 expression in HeLa by RNAi inhibited cell proliferation, colony formation, migration and invasiveness, as well as decreasing Snail and Slug levels, suggesting ZIP6 plays a regulatory role on the ERK1/2-Snail/Slug pathway.
Synonyms:	LIV-1; ZIP6



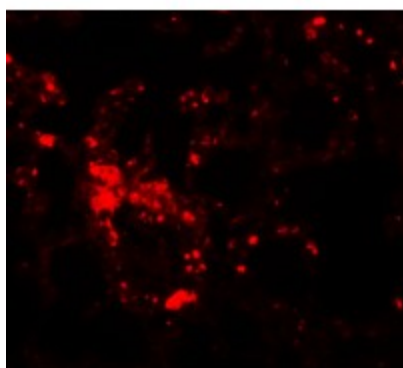
[View online »](#)

Product images:

Western blot analysis of ZIP6 in mouse lung tissue lysate with ZIP6 antibody at 1 ug/mL.



Immunohistochemistry of ZIP6 in mouse lung tissue with ZIP6 antibody at 5 ug/mL.



Immunofluorescence of ZIP6 in mouse lung tissue with ZIP6 antibody at 20 ug/mL.