

## Product datasheet for **TA319871**

### Pannexin 1 (PANX1) Rabbit Polyclonal Antibody

#### Product data:

Product Type:	Primary Antibodies
Applications:	IF, WB
Recommended Dilution:	WB: 1 - 2 ug/mL, IF: 20 ug/mL
Reactivity:	Human, Mouse, Rat
Host:	Rabbit
Isotype:	IgG
Clonality:	Polyclonal
Immunogen:	Rabbit polyclonal PANX1 antibody was raised against a 17 amino acid peptide near the amino terminus of human PANX1.
Formulation:	PANX1 Antibody is supplied in PBS containing 0.02% sodium azide.
Concentration:	1ug/ul
Purification:	PANX1 Antibody is affinity chromatography purified via peptide column.
Conjugation:	Unconjugated
Storage:	Store at -20°C as received.
Stability:	Stable for 12 months from date of receipt.
Predicted Protein Size:	47 kDa
Gene Name:	pannexin 1
Database Link:	<a href="#">NP_056183</a> <a href="#">Entrez Gene 55991 Mouse</a> <a href="#">Entrez Gene 315435 Rat</a> <a href="#">Entrez Gene 24145 Human</a> <a href="#">Q96RD7</a>

**Background:** PANX1 Antibody: The pannexin gene family encodes a second class of putative gap junction proteins and are highly conserved in invertebrates and mammals. Pannexins (Panx) are four-pass transmembrane proteins that oligomerize to form large pore ion and metabolite-permeable channels. Pannexin-1 (PANX1) and Pannexin-3 are closely related, while Pannexin-2 is a more distant relation. PANX1 is a transmembrane protein that forms a mechanosensitive ATP-permeable channel between adjacent cells and in the endoplasmic reticulum. PANX1 may play a role as a Ca<sup>2+</sup>-leak channel to regulate ER Ca<sup>2+</sup> homeostasis and regulates neural stem and progenitor cell proliferation.

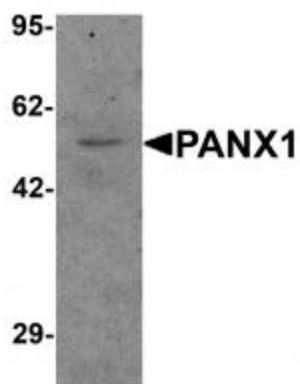


[View online »](#)

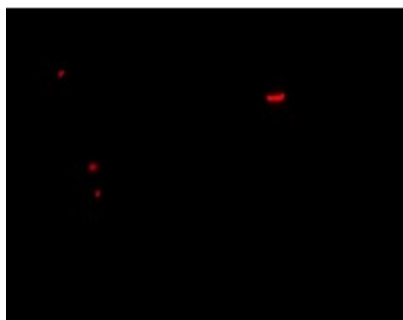
Synonyms: MRS1; PX1; UNQ2529

Protein Families: Transmembrane

### Product images:



Western blot analysis of PANX1 in human ovary tissue lysate with PANX1 antibody at 1 ug/mL.



Immunofluorescence of PANX1 in human ovary tissue with PANX1 antibody at 20 ug/mL.