

Product datasheet for **TA319867**

KPNA6 Rabbit Polyclonal Antibody

Product data:

Product Type:	Primary Antibodies
Applications:	IF, WB
Recommended Dilution:	WB: 1 ug/mL, IF: 20 ug/mL
Reactivity:	Human, Mouse, Rat
Host:	Rabbit
Isotype:	IgG
Clonality:	Polyclonal
Immunogen:	KPNA6 antibody was raised against a 13 amino acid synthetic peptide near the amino terminus of human KPNA6.
Formulation:	KPNA6 Antibody is supplied in PBS containing 0.02% sodium azide.
Concentration:	1ug/ul
Purification:	KPNA6 Antibody is affinity chromatography purified via peptide column.
Conjugation:	Unconjugated
Storage:	Store at -20°C as received.
Stability:	Stable for 12 months from date of receipt.
Gene Name:	karyopherin subunit alpha 6
Database Link:	NP_036448

[Entrez Gene 16650 Mouse](#)[Entrez Gene 362607 Rat](#)[Entrez Gene 23633 Human](#)
[O60684](#)

Background: KPNA6 Antibody: Karyopherin, a cytosolic and heterodimeric protein complex consisting of alpha and beta subunits, is responsible for targeting proteins with nuclear localization signals to the nuclear pore complex (NPC) by an energy requiring, Ran-dependent mechanism. The alpha subunit and imported substrate enter the nucleus and accumulate in the nucleoplasm, while the beta subunit accumulates at the NPC. KPNA6 belongs to a subfamily within the KPNA family that also includes IPOA5&6. Down-regulation of KPNA6 by RNAi expression in HeLa cells strongly inhibited cell proliferation, possibly due to blocking the nuclear import of specific factors essential for cell growth and proliferation. KPNA6 also interacts with the Rev protein of HIV-1 and promote its nuclear import.

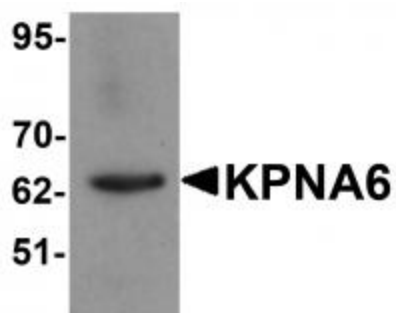


[View online »](#)

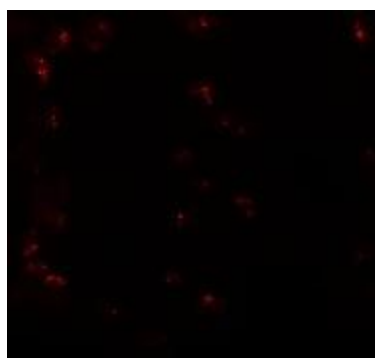
Synonyms: IPOA7; KPNA7

Protein Families: Druggable Genome

Product images:



Western blot analysis of KPNA6 in 293 cell lysate with KPNA6 antibody at 1 ug/mL.



Immunofluorescence of KPNA6 in 293 cells with KPNA6 antibody at 20 ug/mL.