

Product datasheet for **TA319866**

MAN1 (LEMD3) Rabbit Polyclonal Antibody

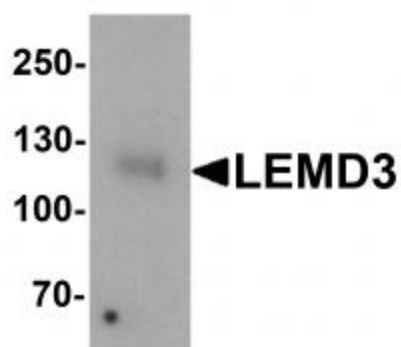
Product data:

Product Type:	Primary Antibodies
Applications:	IF, IHC, WB
Recommended Dilution:	WB: 1 ug/mL, ICC: 2.5 ug/mL, IF: 5 ug/mL
Reactivity:	Human, Mouse
Host:	Rabbit
Isotype:	IgG
Clonality:	Polyclonal
Immunogen:	LEMD3 antibody was raised against an 18 amino acid synthetic peptide near the carboxy terminus of human LEMD3.
Formulation:	LEMD3 Antibody is supplied in PBS containing 0.02% sodium azide.
Concentration:	1ug/ul
Purification:	LEMD3 Antibody is affinity chromatography purified via peptide column.
Conjugation:	Unconjugated
Storage:	Store at -20°C as received.
Stability:	Stable for 12 months from date of receipt.
Gene Name:	LEM domain containing 3
Database Link:	NP_055134 Entrez Gene 23592 Human Q9Y2U8
Background:	LEMD3 Antibody: LEMD3 (LEM domain-containing 3) is a lem-domain containing protein, also known as MAN1, whose loss of function results in disorders characterized by osteopoikilosis, Buschke-Ollendorff syndrome, and melorheostosis. LEMD3 is an inner nuclear membrane protein that interacts with BMP and activin-TGF-beta receptor-activated Smads and antagonizes TGF-beta signaling in human cells.
Synonyms:	MAN1

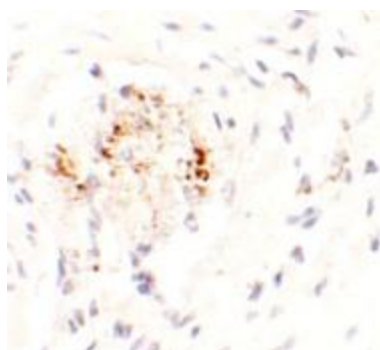


[View online »](#)

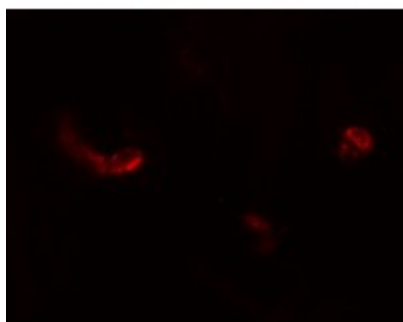
Product images:



Western blot analysis of LEMD3 in human colon tissue lysate with LEMD3 antibody at 1 ug/mL.



Immunohistochemistry of LEMD3 in human colon tissue with LEMD3 antibody at 2.5 ug/mL.



Immunofluorescence of LEMD3 in human colon tissue with LEMD3 antibody at 5 ug/mL.