

## Product datasheet for **TA319863**

### RASD2 Rabbit Polyclonal Antibody

#### Product data:

Product Type:	Primary Antibodies
Applications:	IF, IHC, WB
Recommended Dilution:	WB: 1 - 2 ug/mL, ICC: 2.5 ug/mL, IF: 20 ug/mL
Reactivity:	Human, Mouse, Rat
Host:	Rabbit
Isotype:	IgG
Clonality:	Polyclonal
Immunogen:	TEM2 antibody was raised against a 15 amino acid synthetic peptide near the carboxy terminus of the human TEM2.
Formulation:	TEM2 Antibody is supplied in PBS containing 0.02% sodium azide.
Concentration:	1ug/ul
Purification:	TEM2 Antibody is affinity chromatography purified via peptide column.
Conjugation:	Unconjugated
Storage:	Store at -20°C as received.
Stability:	Stable for 12 months from date of receipt.
Gene Name:	RASD family member 2
Database Link:	<a href="#">NP_055125</a> <a href="#">Entrez Gene 75141 Mouse</a> <a href="#">Entrez Gene 171099 Rat</a> <a href="#">Entrez Gene 23551 Human</a> <a href="#">Q96D21</a>



[View online »](#)

**Background:**

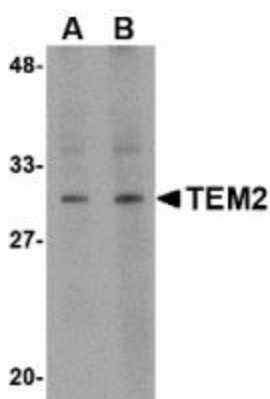
TEM2 Antibody: Rhes, also known as tumor endothelial marker 2 (TEM2), is a small GTP-binding protein that is predominantly expressed in the striatal region of the brain. This protein belongs to the RASD subfamily of Ras-related GTP-binding protein superfamily and is thought to play a role in the normal development and function of the brain as mice lacking this gene showed increased anxiety levels and motor coordination deficits. Rhes was identified as TEM2 through analysis of genes whose expression was upregulated in tumor endothelium. Tumor endothelial markers are significantly up-regulated during angiogenesis and neoangiogenesis that are crucial for the growth of solid tumors. TEMs localized on the cell surface and conserved across species are of particular interest for future development of anti-angiogenic therapies.

**Synonyms:**

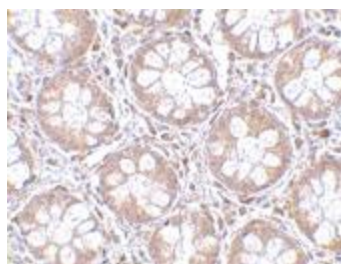
MGC:4834; Rhes; TEM2

**Protein Families:**

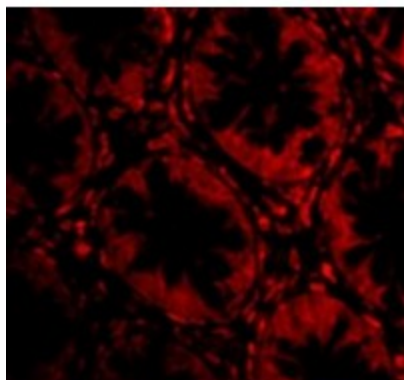
Druggable Genome

**Product images:**

Western blot analysis of TEM2 in human colon tissue lysate with TEM2 antibody at (A) 1 and (B) 2 ug/mL.



Immunohistochemistry of TEM2 in human colon tissue with TEM2 antibody at 2.5 ug/mL.



Immunofluorescence of TEM2 in Human Colon cells with TEM2 antibody at 20 ug/mL.