

Product datasheet for **TA319861**

SLC39A14 Rabbit Polyclonal Antibody

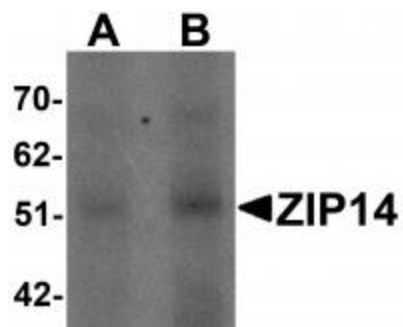
Product data:

Product Type:	Primary Antibodies
Applications:	IF, IHC, WB
Recommended Dilution:	WB: 1 - 2 ug/mL, ICC: 2.5 ug/mL, IF: 20 ug/mL
Reactivity:	Human, Mouse, Rat
Host:	Rabbit
Isotype:	IgG
Clonality:	Polyclonal
Immunogen:	ZIP14 antibody was raised against a 16 amino acid synthetic peptide near the center of human ZIP14.
Formulation:	ZIP14 Antibody is supplied in PBS containing 0.02% sodium azide.
Purification:	ZIP14 Antibody is affinity chromatography purified via peptide column.
Conjugation:	Unconjugated
Storage:	Store at -20°C as received.
Stability:	Stable for 12 months from date of receipt.
Gene Name:	solute carrier family 39 member 14
Database Link:	NP_001128625 Entrez Gene 23516 Human Q15043
Background:	ZIP14 Antibody: The zinc transporter ZIP14, also known as SLC39A14, is a member of a family of divalent ion transporters. Zinc is an essential ion for cells and plays significant roles in the growth, development, and differentiation. The zinc transporter family is divided into four subfamilies (I, II, LIV-1 and gufA). ZIP14 is a glycosylated multipass plasma membrane protein that belongs to the ZIP transporter subfamily LIV-1. ZIP14 has been shown to contribute to the hypozincemia of inflammation and infection and is regulated in the liver by IL-6. In addition to zinc, ZIP14 is also involved in the cellular uptake of non-transferrin-bound iron as well as iron bound to transferrin.
Synonyms:	cig19; HMNDYT2; LZT-Hs4; NET34; ZIP14

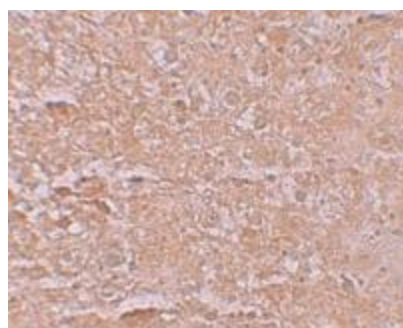


[View online »](#)

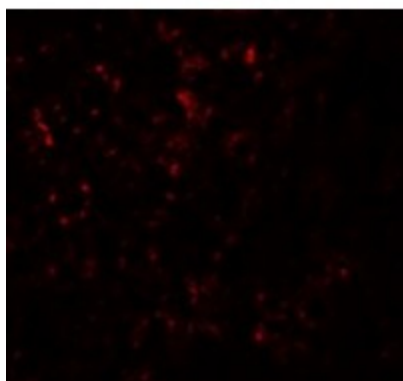
Product images:



Western blot analysis of ZIP14 in human spleen tissue lysate with ZIP14 antibody at (A) 1 and (B) 2 ug/mL.



Immunohistochemistry of ZIP14 in mouse liver tissue with ZIP14 antibody at 2.5 ug/mL.



Immunofluorescence of ZIP14 in Mouse Liver tissue with ZIP14 antibody at 20 ug/mL.