

## Product datasheet for TA319859

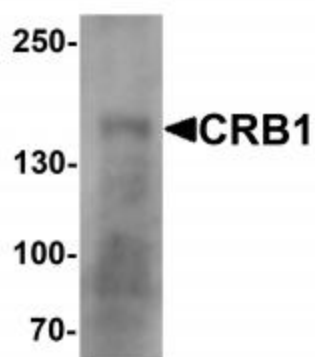
### CRB1 Rabbit Polyclonal Antibody

#### Product data:

Product Type:	Primary Antibodies
Applications:	WB
Recommended Dilution:	WB: 1 - 2 ug/mL
Reactivity:	Human
Host:	Rabbit
Isotype:	IgG
Clonality:	Polyclonal
Immunogen:	Rabbit polyclonal CRB1 antibody was raised against an 18 amino acid peptide near the center of human CRB1.
Formulation:	CRB1 Antibody is supplied in PBS containing 0.02% sodium azide.
Concentration:	1ug/ul
Purification:	CRB1 Antibody is affinity chromatography purified via peptide column.
Conjugation:	Unconjugated
Storage:	Store at -20°C as received.
Stability:	Stable for 12 months from date of receipt.
Predicted Protein Size:	142 kDa
Gene Name:	crumbs 1, cell polarity complex component
Database Link:	<a href="#">NP_001180569</a> <a href="#">Entrez Gene 23418 Human</a> <a href="#">P82279</a>
Background:	CRB1 Antibody: CRB1 (Crumbs homolog 1) plays a role in photoreceptor morphogenesis in the retina. It may maintain cell polarization and adhesion. CRB1 is similar to the Drosophila crumbs protein and localizes to the inner segment of mammalian photoreceptors. The first identified human homolog, CRB1, is expressed in retina and some parts of the brain, leaving room for another homolog to function in epithelial tissues. Mutations in this gene are associated with a severe form of retinitis pigmentosa, RP12, and with Leber congenital amaurosis.
Synonyms:	crumbs homolog 1; crumbs homolog 1 (Drosophila); LCA8; OTTHUMP00000033690; RP12


[View online »](#)

## Product images:



Western blot analysis of CRB1 in human small intestine Tissue lysate with CRB1 antibody at 1 ug/mL.