

Product datasheet for **TA319853**

VPS39 Rabbit Polyclonal Antibody

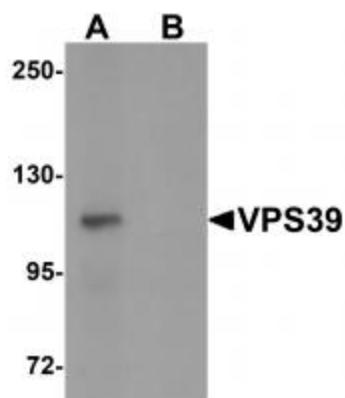
Product data:

Product Type:	Primary Antibodies
Applications:	IF, IHC, WB
Recommended Dilution:	WB: 0.5 ug/mL, ICC: 5 ug/mL, IF: 20 ug/mL
Reactivity:	Human, Mouse, Rat
Host:	Rabbit
Isotype:	IgG
Clonality:	Polyclonal
Immunogen:	VPS39 antibody was raised against a 18 amino acid synthetic peptide near the carboxy terminus of human VPS39.
Formulation:	VPS39 Antibody is supplied in PBS containing 0.02% sodium azide.
Concentration:	1ug/ul
Purification:	VPS39 Antibody is affinity chromatography purified via peptide column.
Conjugation:	Unconjugated
Storage:	Store at -20°C as received.
Stability:	Stable for 12 months from date of receipt.
Gene Name:	VPS39, HOPS complex subunit
Database Link:	AAQ05978 Entrez Gene 23339 Human Q96JC1
Background:	VPS39 Antibody: VPS39 is the mammalian homolog of the yeast vacuolar protein VAM6, that in mammals, promotes lysosome clustering and fusion in vivo. VPS39 is also thought to modulate the TGF-beta response by coupling the TGF-beta receptor complex to the Smad pathway. Similar to the related protein TRAP1, the VPS39 protein is essential for early embryonic development, with mice lacking VPS39 dying at or before E6.5.
Synonyms:	hVam6p; TLP; VAM6

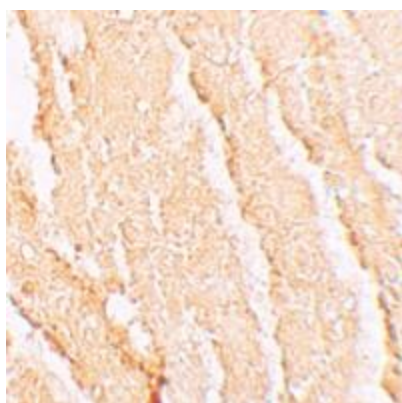


[View online »](#)

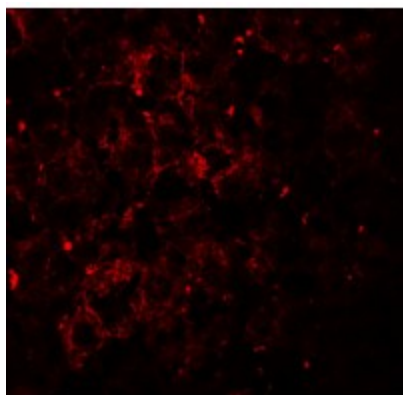
Product images:



Western blot analysis of VPS39 in rat liver tissue lysate with VPS39 antibody at 0.5 ug/mL in (A) the absence and (B) the presence of blocking peptide.



Immunohistochemistry of VPS39 in mouse liver tissue with VPS39 antibody at 5 ug/mL.



Immunofluorescence of VPS39 in mouse liver tissue with VPS39 antibody at 20 ug/mL.